

## VONNEGUT KRAFT

## Crescent Lounge

The Crescent Lounge by Vonnegut/Kraft is carefully composed of half round walnut stock resolved into a series of balanced joints. The oak frame holds the mattress in place while the crescent headrest rises above to give the piece its distinctive profile.



## Standard Materials:

Wood, COM

## As Shown:

Ash, Wool Canvas

## COM Requirements:

Bolster: 1 yard  
Chaise: 5 yards

## Standard Wood Finishes:

Matte Clear, Oil/Wax

## Standard Dimensions:

40.5"W x 80"L x 18"H

## Lead Time:

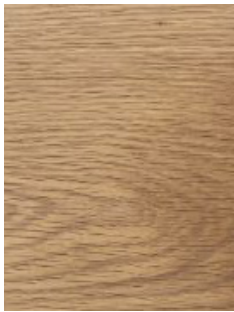
22 -26 Weeks

## VONNEGUT KRAFT

### Materials and Finishes

#### STANDARD WOOD MATERIAL FINISHES

Custom materials & finish matching available.



White Oak



Black Dyed Ash



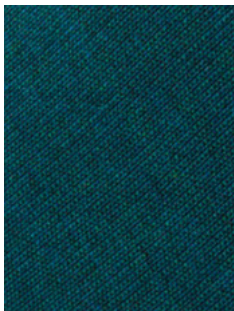
Bleached Ash



Walnut

#### STANDARD UPHOLSTERY

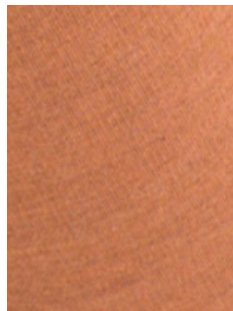
Custom materials & finish matching available.



Wool Canvas Blue



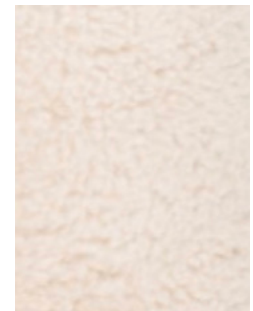
Wool Canvas Pink



Wool Canvas Rust



Wool Canvas Gray



Shearling (bolster)