

Hiroko Takeda

Starlight

Starlight weaves metallic fibers intricately into a sheer structure, creating a shimmering effect that captures and dynamically reflects light.



Standard Materials:

Linen, metallic yarn

Shown As:

Silver

Standard Dimensions:

Width: 54" W

Colors:

Silver, Gold, White Silver

11 7/8" (V)

Custom Repeat and /  
or vertical Border also  
available

Weight:

8.45 oz/yd

Lead Time:

Please Inquire

HIROKO TAKEDA

Materials and Finishes

STANDARD COLOR MATERIAL FINISHES

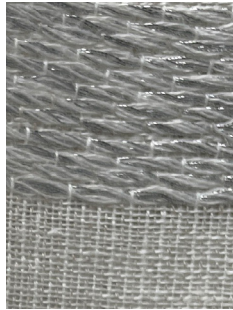
Custom materials & finish matching available.

**\*\*Care:** Dry Clean

**Application:**  
Drapery, Screen



Gold



Silver



White Silver