

BEC BRITTAIN

FKA Themis Pendant
8.5

Originally inspired by Victorian balancing toys, the THEMIS sconce juxtaposes the cone form of its hand-blown glass diffuser with the triangular shape of its marble support bracket.



Standard Materials:
Finished Brass, Glass globes

Shown As:
Oil Rubbed Bronze and
Grey Glass

Standard Dimensions:
8.5" Dia. x 8.5H

Special Order Finishes:
Polished Brass
Medium Antique Brass
Polished Nickel
Dark Pewter
Polished Black Nickel
Polished Copper
Smoky Copper

Metal Finishes
Brushed Brass, Oil Rubbed
Bronze, Satin Nickel, Nickel
Brass Contrast

Lead Time:
14-16 weeks

Bec Brittain

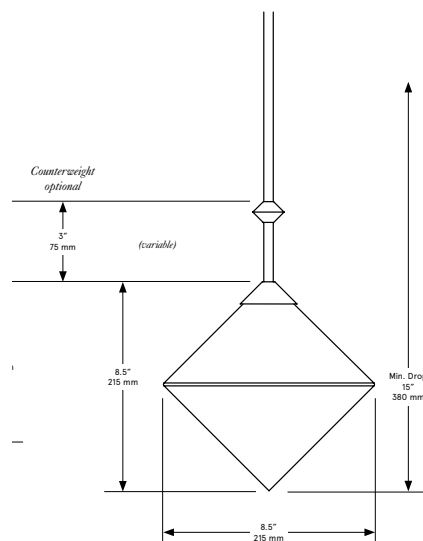
FKA Themis Pendant

8.5

Mounting: Universal

Weight :
3 lbs

Dimensional Drawing



Lamping:

G9 LED bulb ELV
dimming 110-120 VAC
Lumens 2700 Kelvin

220-240
Lumens 3000 Kelvin

Installation - Standard:

1/8 IP brass stem with
matching metal finish up
to 35 inch length included
with fixture. Length up
to 95 inches available for
additional cost.

Canopy:

5 x 0.25 inch (127 x 6 mm)
round in matching metal
finish

Brightness:

240-250 Lumens

Max Wattage:

2.5-4W

Wiring:

Direct 120 / 240 VAC
line voltage connection
Requires an Electronic Low-
Voltage dimmer switch

Certifications:

CE, Damp Locations, Outdoor and Wet
Locations, UL and cUL Certified



BEC BRITTAIN

Materials and Finishes

STANDARD MATERIAL FINISHES

Custom materials & finish matching available.



Brushed Brass



Satin Nickel



Nickel Brass
Contrast



Oil Rubbed Bronze

SPECIAL FINISHES (add 10%) MATERIAL FINISHES

Custom materials & finish matching available.



Polished Brass



Polished Nickel



Polished Copper



Medium Antique
Brass



Dark Pewter



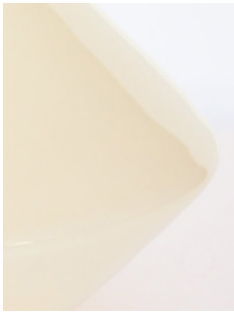
Polished Black
Nickel

BEC BRITTAIN

Materials and Finishes

GLASS MATERIAL FINISHES

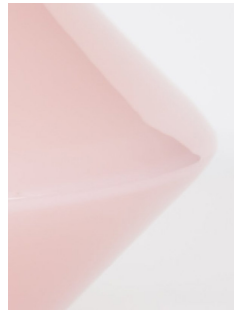
Custom materials & finish matching available.



Ivory



White



Soft Pink



Grey