

BEC BRITTAIN

FKA Themis Pendant  
6.5

Originally inspired by Victorian balancing toys, the THEMIS sconce 6 juxtaposes the cone form of its hand-blown glass diffuser with the triangular shape of its marble support bracket.



Standard Materials:  
Finished Brass, Glass globes

Shown As:  
Oil Rubbed Bronze and  
Grey Glass

Standard Dimensions:  
6.5" Dia. x 6.5H

Special Order Finishes:  
Polished Brass  
Medium Antique Brass  
Polished Nickel  
Dark Pewter  
Polished Black Nickel  
Polished Copper  
Smoky Copper

Metal Finishes:  
Brushed Brass, Oil Rubbed  
Bronze, Satin Nickel, Nickel  
Brass Contrast

Lead Time:  
14-16 weeks

Bec Brittain

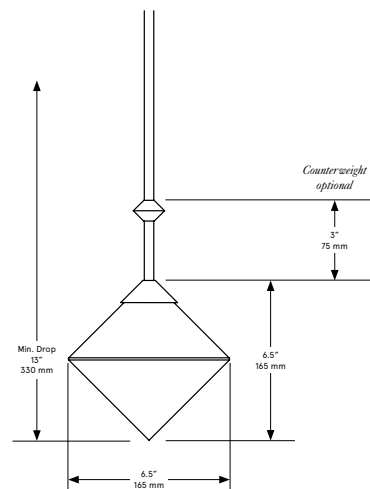
FKA Themis Pendant

6.5

Mounting: Universal

Weight :  
2 lbs

Dimensional Drawing



Lamping:

G9 LED bulb ELV  
dimming 110-120 VAC  
Lumens 2700 Kelvin

220-240  
Lumens 3000 Kelvin

Installation - Standard:

1/8 IP brass stem with  
matching metal finish up  
to 35 inch length included  
with fixture. Length up  
to 95 inches available for  
additional cost.

Canopy:

5 x 0.25 inch (127 x 6 mm)  
round in matching metal  
finish

Brightness:

240-250 Lumens

Max Wattage:

2.5-4W

Wiring:

Direct 120 / 240 VAC  
line voltage connection  
Requires an Electronic Low-  
Voltage dimmer switch

Certifications:

CE, Damp Locations, Outdoor and Wet  
Locations, UL and cUL Certified



BEC BRITTAIN

Materials and Finishes

STANDARD MATERIAL FINISHES

Custom materials & finish matching available.



Brushed Brass



Satin Nickel



Nickel Brass  
Contrast



Oil Rubbed Bronze

SPECIAL FINISHES (add 10%) MATERIAL FINISHES

Custom materials & finish matching available.



Polished Brass



Polished Nickel



Polished Copper



Medium Antique  
Brass



Dark Pewter



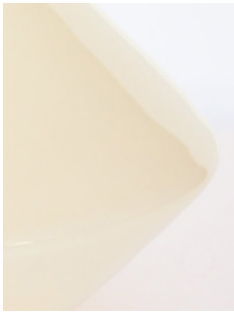
Polished Black  
Nickel

BEC BRITTAIN

Materials and Finishes

GLASS MATERIAL FINISHES

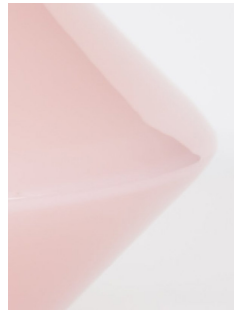
Custom materials & finish matching available.



Ivory



White



Soft Pink



Grey