

GRAIN

Walling Rug

A one-of-a-kind braided mixed material rug inspired by dry stacked stone walls. Handmade in New England by a mill with 30 years of manufacturing experience, this unique rug is braided and stitched together using natural undyed Canadian wool, polypropylene and Sunbrella yarn. Shown in a mix of undyed Canadian wool, polypropylene, and Sunbrella yarn. This piece was conceived for Colony's group show, Balance / Unbalanced, 2018. Custom materials, dimensions and finishes available including Sunbrella yarn which is suitable for use outdoors.



Standard Materials:

Natural Wool, Sunbrella,
Wool/Poly Blend

As Shown:

Natural Wool, Wool Blend,
Sunbrella

Standard Dimensions:

134" W x 155.5" H

Lead Time:

12 - 16 weeks

GRAIN

Materials and Finishes

NATURAL WOOL MATERIAL FINISHES

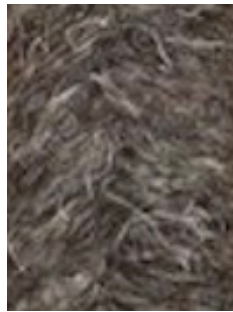
Custom materials & finish matching available.



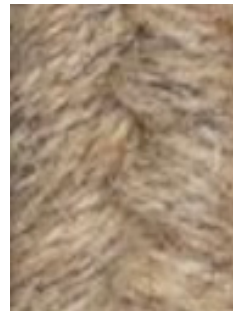
Cream NW30



Light Grey NW31



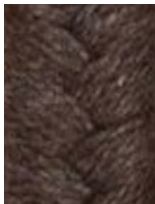
Dark Grey NW32



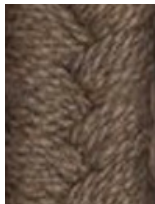
Wheat NW33

SUNBRELLA MATERIAL FINISHES

Custom materials & finish matching available.



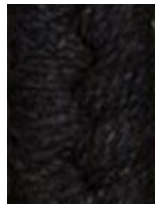
Mink (SA01)



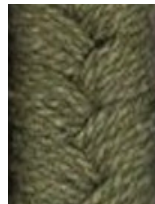
Mushroom (SA02)



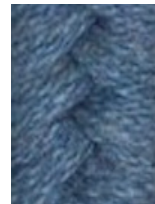
Granite (SA05)



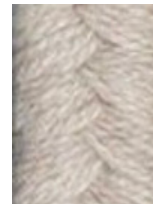
Ebony (SA06)



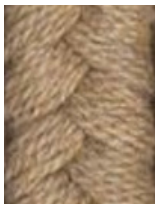
Basil (SA07)



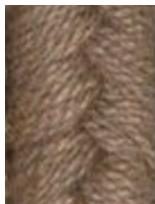
Cornflower (SA09)



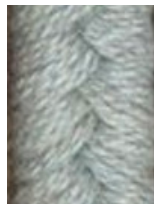
Papyrus (SA10)



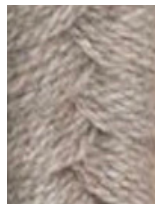
Wheat (SA11)



Alpaca (SA12)



Sea (SA13)

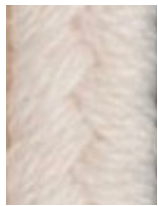


Ash (SA14)

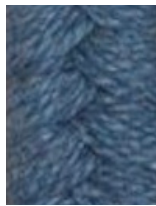
GRAIN

Materials and Finishes

WOOL/ POLY BLEND MATERIAL FINISHES
Custom materials & finish matching available.



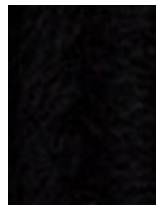
Natural (W400)



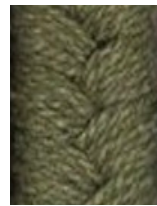
China Blue (W401)



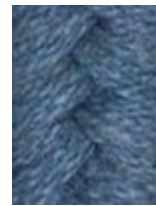
Blue Moon (W403)



Black (W405)



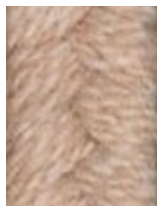
Basil (SA07)



Cornflower (SA09)



Papyrus (SA10)



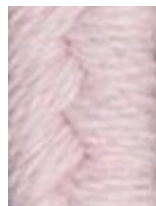
Oatmeal (W413)



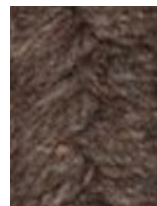
Teal (W417)



Light Grey (W418)



Blush Pink (W420)



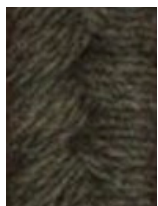
Bark (W435)



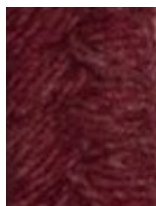
Slate Grey (W440)



Mocha (W450)



Olive (W451)



Holly Berry (W452)