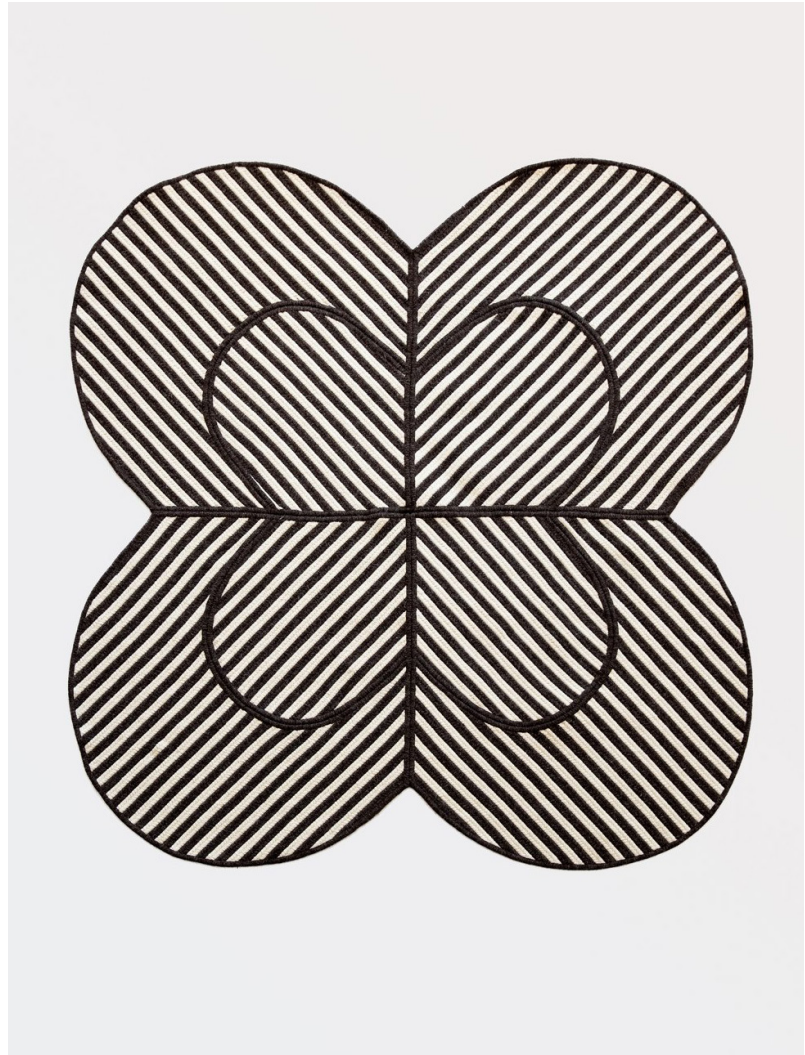


## GRAIN

## Quilt Rug

A series of rugs that take direct inspiration from the patchwork quilt making process. Blocks of braided wool evoke the looser style of scrap quilts by allowing irregular shapes to comprise the whole. Handmade in New England by a mill with 30 years of manufacturing experience, each rug is braided and sewn to order using natural undyed Canadian wool. This piece was conceived for Colony's group show, Pas de Deux, 2019.



## Standard Materials:

Natural Wool, Sunbrella,  
Wool/Poly Blend

## As Shown:

Cream and Dark Brown  
Wool

## Standard Dimensions:

Small : 84" W x 60" H  
Large : 120" W x 96" H  
Runner: 84" W x 30" H  
Matt: 36"H x 24"H

## Lead Time:

12- 12 weeks

GRAIN

Materials and Finishes

NATURAL WOOL MATERIAL FINISHES

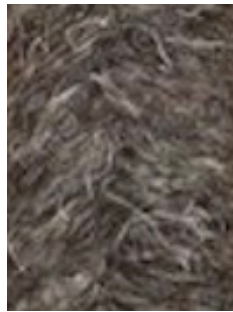
Custom materials & finish matching available.



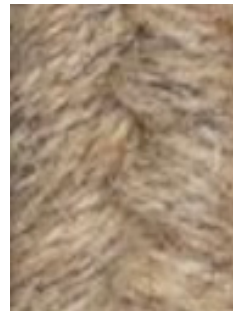
Cream NW30



Light Grey NW31



Dark Grey NW32



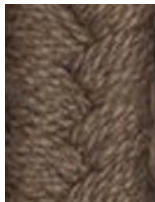
Wheat NW33

SUNBRELLA MATERIAL FINISHES

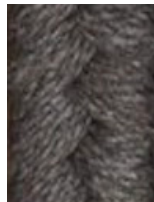
Custom materials & finish matching available.



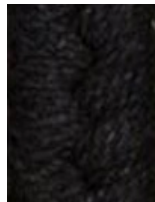
Mink (SA01)



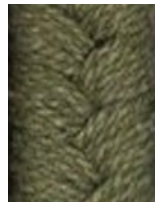
Mushroom (SA02)



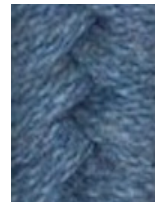
Granite (SA05)



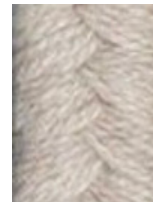
Ebony (SA06)



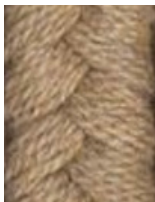
Basil (SA07)



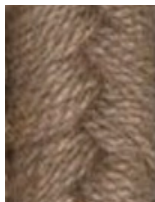
Cornflower (SA09)



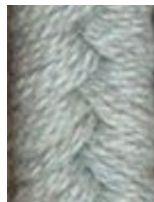
Papyrus (SA10)



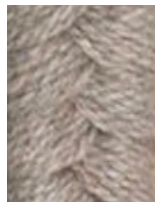
Wheat (SA11)



Alpaca (SA12)



Sea (SA13)



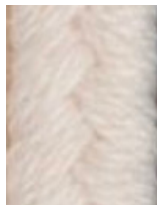
Ash (SA14)

GRAIN

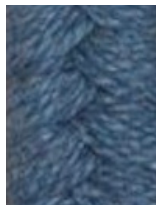
Materials and Finishes

STANDARD WOOL/ POLY BLEND MATERIAL FINISHES

Custom materials & finish matching available.



Natural (W400)



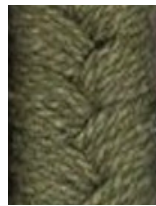
China Blue (W401)



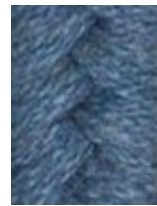
Blue Moon (W403)



Black (W405)



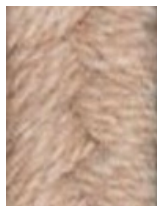
Basil (SA07)



Cornflower (SA09)



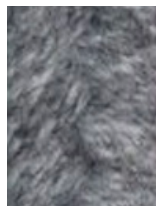
Papyrus (SA10)



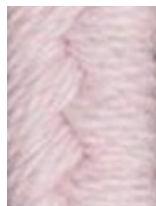
Oatmeal (W413)



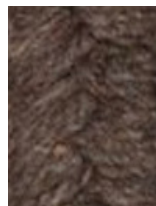
Teal (W417)



Light Grey (W418)



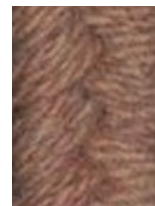
Blush Pink (W420)



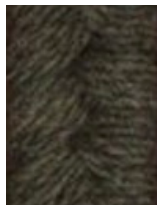
Bark (W435)



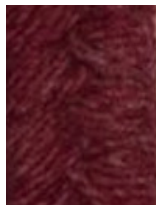
Slate Grey (W440)



Mocha (W450)



Olive (W451)



Holly Berry (W452)