

VONNEGUT KRAFT

Pastille Side Table

The Pastille Tables were created in collaboration with ceramist Natalie Weinberger. The ceramic tabletop of the Pastille Side Table features a bright glossy red glaze with subtle crackle pattern. The base is constructed using graphic stretchers that give dimension and optical illusions of moire patterns as the viewer moves around the piece, always creating a new perspective, pattern and asymmetry depending on location.



As Shown:

Black Lacquered Ash and
Glossy Red Glaze

Standard Materials:

Wood and Ceramic

Standard Wood Finishes:

Matte Clear, Oil/Wax

Standard Dimensions:

17"Ø x 19.5"H

Lead Time:

22 -26 Weeks

VONNEGUT KRAFT
Materials and Finishes

STANDARD WOOD MATERIAL FINISHES
Custom materials & finish matching available.



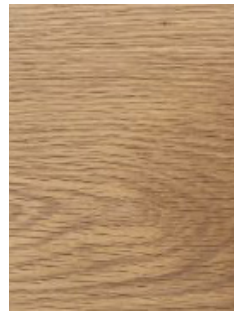
Black Dyed Ash



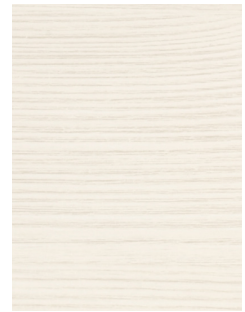
Walnut



Bleached Maple

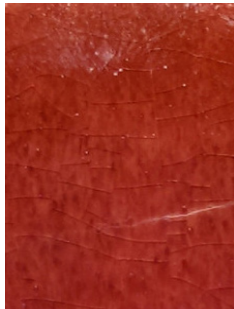


White Oak



Bleached Ash

STANDARD CERAMIC MATERIAL FINISHES
Custom materials & finish matching available.



Red Glaze



Black Glaze