

VONNEGUT KRAFT

Pastille Coffee Table

The Pastille Tables were created in collaboration with ceramist Natalie Weinberger. The ceramic tabletop of the Pastille Coffee Table features a matte black pitted glaze. The base is constructed using graphic stretchers that give dimension and optical illusions of moire patterns as the viewer moves around the piece, always creating a new perspective, pattern and asymmetry depending on location.



As Shown:
Black Lacquered Ash and
Glossy Red Glaze

Standard Materials:
Wood and Ceramic

Standard Wood Finishes:
Matte Clear, Oil/Wax

Standard Dimensions:
28"Ø x 15"H

Lead Time:
22 -26 Weeks

VONNEGUT KRAFT
Materials and Finishes

STANDARD WOOD MATERIAL FINISHES
Custom materials & finish matching available.



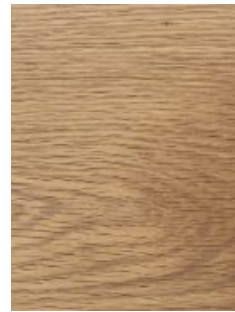
Black Dyed Ash



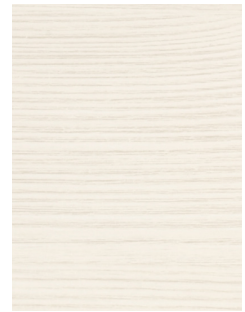
Walnut



Bleached Maple



White Oak

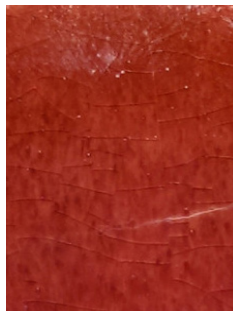


Bleached Ash

STANDARD CERAMIC MATERIAL FINISHES
Custom materials & finish matching available.



Black Glaze



Red Glaze