

GRAIN

Link Rug/Runner

Handmade in New England by a mill with 30 years of manufacturing experience, the Lands Rug is inspired by aerial landscapes and crop circles. The alternating stripes in the Lands Rug map out the composition of shapes with each changing direction.



Standard Materials:
Natural Wool, Sunbrella,
Wool/Poly Blend

As Shown:
Cream / Wheat Wool

Standard Dimensions:
Small : 60" W x 30" H
Large : 60" W x 96" H
Runner: 30" W x 108"H

Lead Time:
12- 14 weeks

GRAIN

Materials and Finishes

NATURAL WOOL MATERIAL FINISHES

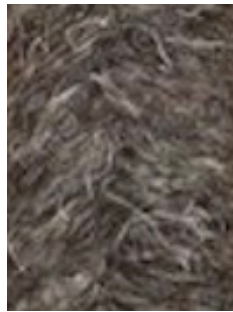
Custom materials & finish matching available.



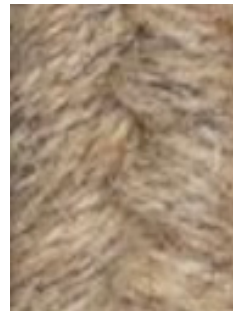
Cream NW30



Light Grey NW31



Dark Grey NW32



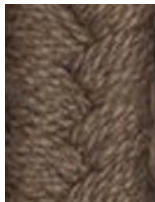
Wheat NW33

SUNBRELLA MATERIAL FINISHES

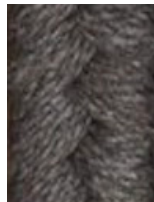
Custom materials & finish matching available.



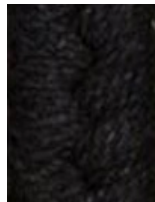
Mink (SA01)



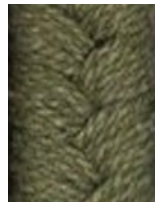
Mushroom (SA02)



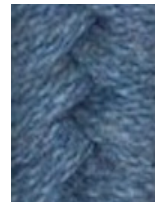
Granite (SA05)



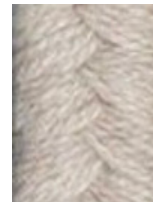
Ebony (SA06)



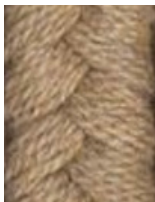
Basil (SA07)



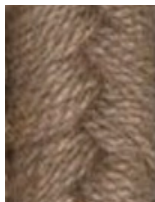
Cornflower (SA09)



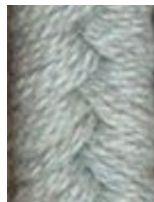
Papyrus (SA10)



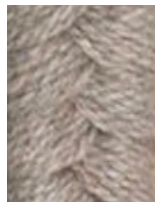
Wheat (SA11)



Alpaca (SA12)



Sea (SA13)



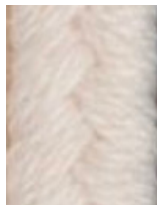
Ash (SA14)

GRAIN

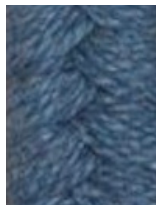
Materials and Finishes

STANDARD WOOL/ POLY BLEND MATERIAL FINISHES

Custom materials & finish matching available.



Natural (W400)



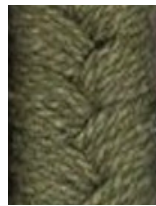
China Blue (W401)



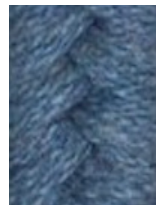
Blue Moon (W403)



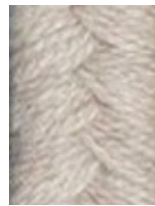
Black (W405)



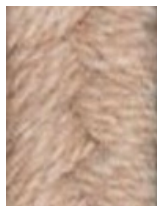
Basil (SA07)



Cornflower (SA09)



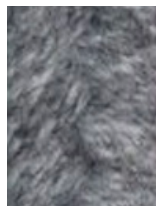
Papyrus (SA10)



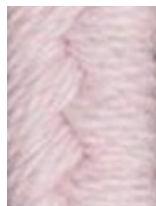
Oatmeal (W413)



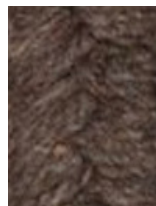
Teal (W417)



Light Grey (W418)



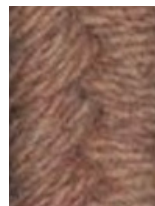
Blush Pink (W420)



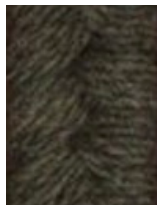
Bark (W435)



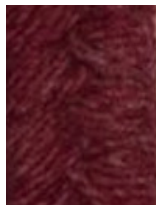
Slate Grey (W440)



Mocha (W450)



Olive (W451)



Holly Berry (W452)