

GRAIN

Duo Rug

Braided wool rug composed of a simple circle and oval shape bound together. Each shape in the Duo Rug explores a subtle contrast in braiding technique with the circle made of a flat braid coil and the oval made of cable lock braided rows with a contrasting zig zag stitch.



Standard Materials:
Natural Wool, Sunbrella,
Wool/Poly Blend

As Shown:
Cream wool

Standard Dimensions:
Large: 96" L x 129" W

Lead Time:
12- 14 weeks

GRAIN

Materials and Finishes

NATURAL WOOL MATERIAL FINISHES

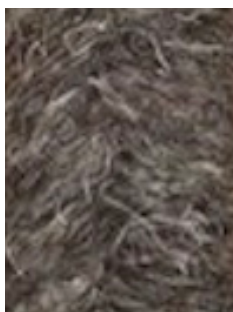
Custom materials & finish matching available.



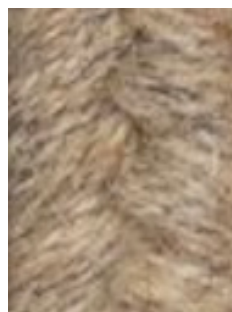
Cream NW30



Light Grey NW31



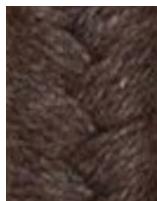
Dark Grey NW32



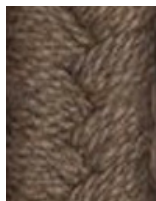
Wheat NW33

SUNBRELLA MATERIAL FINISHES

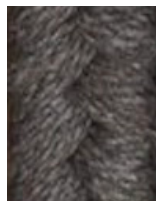
Custom materials & finish matching available.



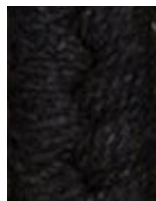
Mink (SA01)



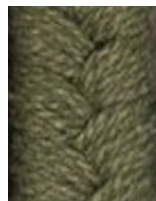
Mushroom (SA02)



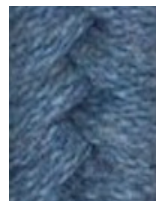
Granite (SA05)



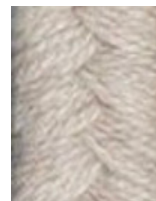
Ebony (SA06)



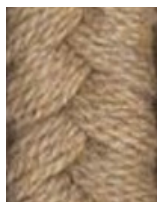
Basil (SA07)



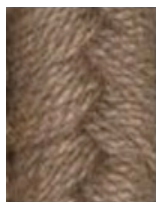
Cornflower (SA09)



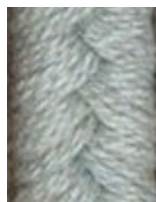
Papyrus (SA10)



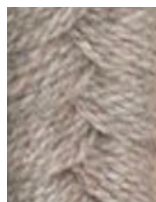
Wheat (SA11)



Alpaca (SA12)



Sea (SA13)



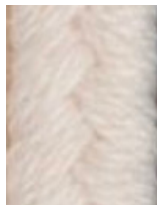
Ash (SA14)

GRAIN

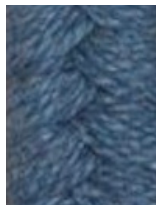
Materials and Finishes

STANDARD WOOL/ POLY BLEND MATERIAL FINISHES

Custom materials & finish matching available.



Natural (W400)



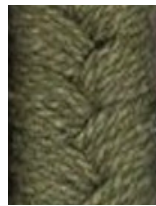
China Blue (W401)



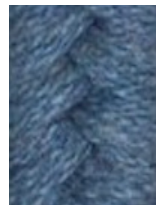
Blue Moon (W403)



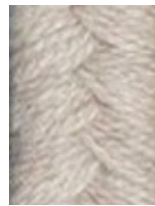
Black (W405)



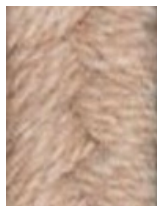
Basil (SA07)



Cornflower (SA09)



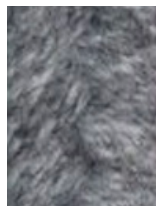
Papyrus (SA10)



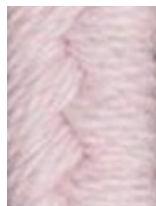
Oatmeal (W413)



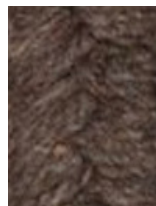
Teal (W417)



Light Grey (W418)



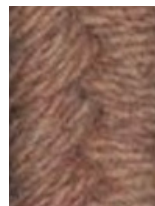
Blush Pink (W420)



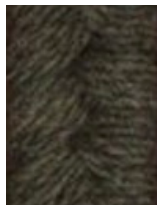
Bark (W435)



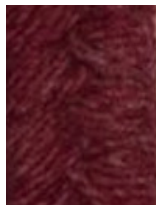
Slate Grey (W440)



Mocha (W450)



Olive (W451)



Holly Berry (W452)