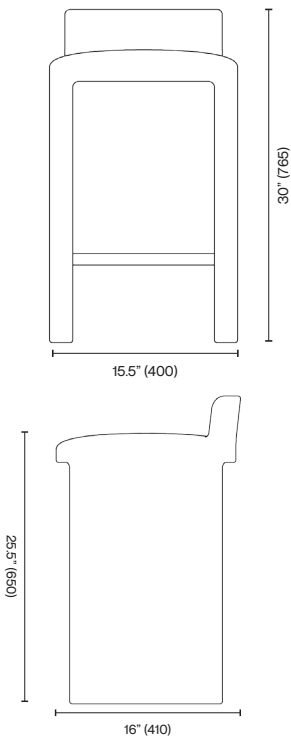


Studio Paolo Ferrari  
Solid Leg Stool

The Solid Leg Stool features a fully upholstered body with a striking hammered-metal footrest. Shown in a hearth colored wool, acrylic, cotton and polyester blend.



Standard Materials:  
COM, Metal

As Shown:  
Maharam Hearth Wedding,  
Hammered Metal

Standard Metal Finishes:  
Hammered Metal

COM Requirements:  
COM 5 Yards

Standard Dimensions:  
16" L x 15.5" D x 30" H  
Seat Height: 25.5"

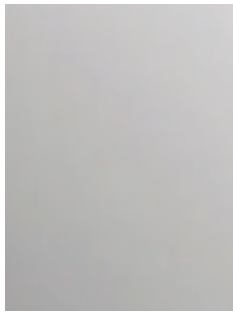
Lead Time:  
14- 16 weeks

Studio Paolo Ferrari  
Materials and Finishes

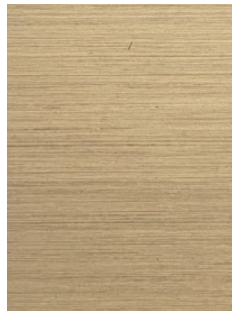
STANDARD METAL MATERIAL FINISHES  
Custom materials & finish matching available.



Hammered Metal 01



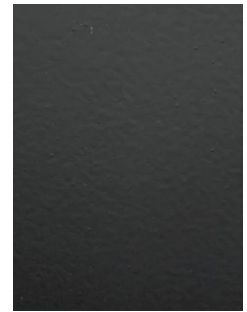
Polished Nickle 01\*



Brushed Bronze 01\*



Darkened Brushed  
Bronze 01\*



Matte Black 01\*