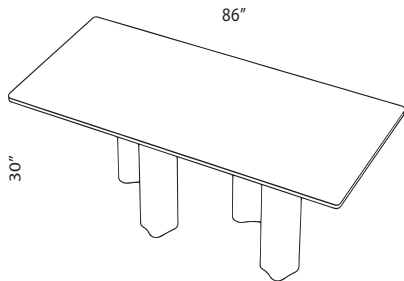


SSS ATELIER

Ledge Dining Table -  
Wood

The Ledge Dining Table is anchored in organically shaped solid wood legs supporting its distinctive double bullnose edge top.



Shown As:  
White Oak

Standard Materials:  
Wood

Standard Wood Finishes:  
White Oak, Walnut,  
Ebonized Oak

Standard Dimensions:  
40"L x 86"W x 30"H

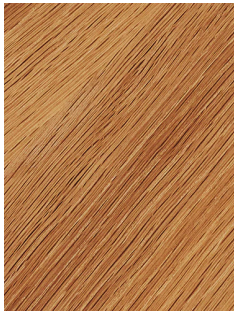
Lead Time:  
16 -18 weeks

SSS Atelier

Materials and Finishes

STANDARD WOOD MATERIAL FINISHES

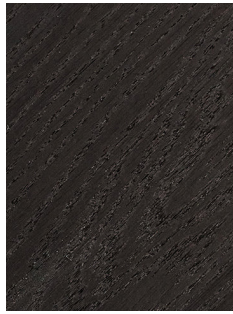
Custom materials & finish matching available.



White Oak



Walnut



Ebonized Oak