

Studio Paolo Ferrari  
Layered Back Sofa

The Layered Back Sofa is designed to be free-standing or slightly pulled away from the wall. The sculptural low back sofa is surrounded by dual wrapping back supports which layer against one another. The sofa sits on a slender metal frame.



Standard Materials:

COM, Metal

As Shown:

Maharam Mohair Supreme Capiz ,  
Matte Black 01

COM Requirements:

- (1) 14 Yards
- (2) 16 Yards
- (3) 18 Yards

Standard Metal Finishes:

Matte Black 01

Standard Dimensions:

- (1) 84 " L x 46 " D x 30 " H
- (2) 96 " L x 46 " D x 30 " H
- (3) 112 " L x 46 " D x 30 " H

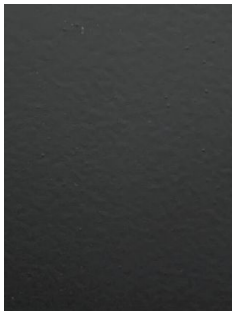
Lead Time:

14- 16 weeks

Seat Height: 16 "

Studio Paolo Ferrari  
Materials and Finishes

STANDARD METAL MATERIAL FINISHES  
Custom materials & finish matching available.



Matte Black 01



Hammered Metal  
01\*



Polished Nickel 01\*



Brushed Bronze 01\*



Darkened Brushed  
Bronze 01\*