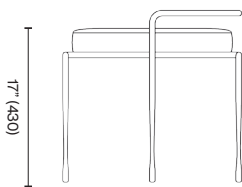
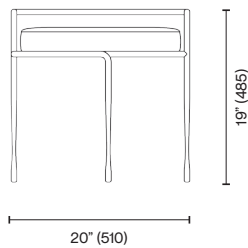


Studio Paolo Ferrari  
Hammered Metal  
Stool

The Hammered Metal Stool features a textured frame topped with an upholstered seat cushion. Shown in a hammered black metal and wool mohair. Custom materials, dimensions and finishes available.



Standard Materials:

COM, Metal

As Shown:

Hammered Metal and Wool  
Mohair

Standard Metal Finishes:

Hammered Metal

COM Requirements:

COM 1.5 Yards

Standard Dimensions:

20 " D x 19 " D  
Seat Height: 17 "

Lead Time:

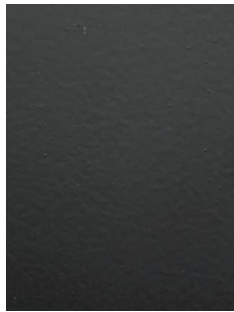
14- 16 weeks

Studio Paolo Ferrari  
Materials and Finishes

STANDARD METAL MATERIAL FINISHES  
Custom materials & finish matching available.



Hammered Metal 01



Matte Black 01\*



Polished Nickle 01\*



Brushed Bronze 01\*



Darkened Brushed  
Bronze 01\*