

Studio Paolo Ferrari  
Double Layered Back  
Sofa

The Double Layered Back Sofa is designed to be free-standing or slightly pulled away from the wall. The sculptural low back sofa is surrounded by dual wrapping back supports which layer against one another. The sofa sits on a slender metal frame.



Standard Materials:

COM, Metal

Standard Metal Finishes:

Matte Black 01

As Shown:

Fabric and Steel Knit Ivory,  
Matte Black 01

Standard Dimensions:

(S) 84" L x 36" D x 33" H  
(M) 96" L x 36" D x 33" H  
(L) 112" L x 36" D x 33" H

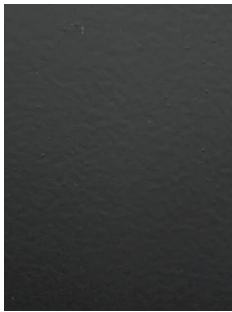
Lead Time:

16- 18 weeks

Seat Height: 16"

Studio Paolo Ferrari  
Materials and Finishes

STANDARD METAL MATERIAL FINISHES  
Custom materials & finish matching available.



Matte Black 01



Hammered Metal  
01\*



Polished Nickle 01\*



Brushed Bronze 01\*



Darkened Brushed  
Bronze 01\*