

Studio Paolo Ferrari
Cloud Sofa

The Cloud Sofa is designed to be free-standing or slightly pulled away from the wall. Upholstered cushions rest atop exquisite hand-hammered metal legs.



Standard Materials:
COM, Metal

As Shown:
Contrary Mohair,
Hammered Metal

Standard Metal Finishes:
Hammered Steel

COM Requirements:
16 yards

Standard Dimensions:
94" W x 45" D x 28.5" H
Seat Height: 16"

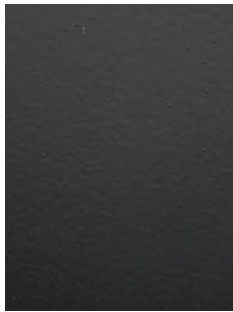
Lead Time:
16- 18 weeks

Studio Paolo Ferrari
Materials and Finishes

STANDARD METAL MATERIAL FINISHES
Custom materials & finish matching available.



Hammered Metal O1



Matte Black O1*



Polished Nickle O1*



Brushed Bronze O1*



Darkened Brushed
Bronze O1*