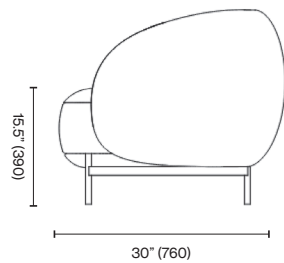
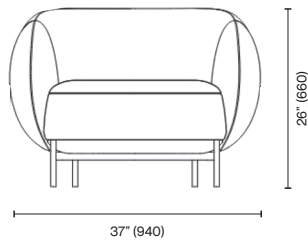


Studio Paolo Ferrari
Cloud Lounge

The Cloud Lounge embodies the language of softness Studio Paolo Ferrari's Edition 4 collection speaks. Capacious, upholstered cushions rest atop exquisite hand-hammered metal legs.



Standard Materials:
COM, Metal

As Shown:
Maharam Nestle Embark,
Hammered Metal

Standard Metal Finishes:
Hammered Metal

COM Requirements:
COM 6 Yards

Standard Dimensions:
37" L x 31" D x 26" H
Seat Height: 16"

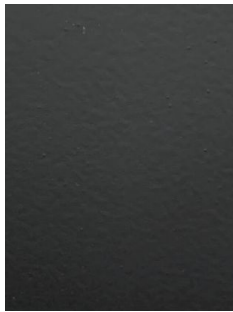
Lead Time:
14 -16 weeks

Studio Paolo Ferrari
Materials and Finishes

STANDARD METAL MATERIAL FINISHES
Custom materials & finish matching available.



Hammered Metal 01



Matte Black 01*



Polished Nickle 01*



Brushed Bronze 01*



Darkened Brushed
Bronze 01*