

Studio Paolo Ferrari  
Bolster Back Sofa

The Bolster Back Sofa curved form is designed to be free-standing or slightly pulled away from the wall.



Standard Materials:  
COM, Metal

As Shown:  
Primavera Contrary Mohair,  
Brushed Bronze 01

Standard Metal Finishes:  
Brushed Bronze 01

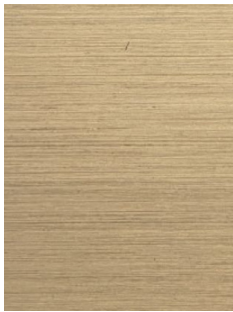
COM Requirements:  
COM 14 Yards

Standard Dimensions:  
85" L x 53" D x 29.25" H  
Seat Height: 16"

Lead Time:  
16 - 18 weeks

Studio Paolo Ferrari  
Materials and Finishes

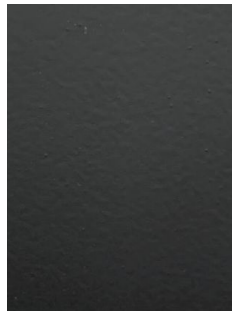
STANDARD METAL MATERIAL FINISHES  
Custom materials & finish matching available.



Brushed Bronze 01



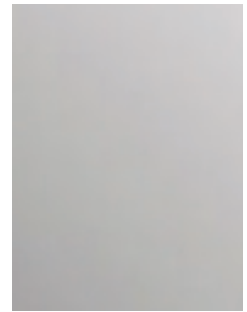
Darkened Brushed  
Bronze 01



Matte Black 01\*



Hammered Metal  
01\*



Polished Nickle 01\*