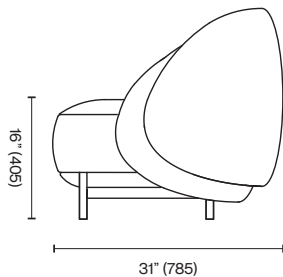
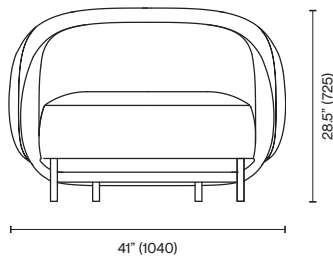


Studio Paolo Ferrari
Ame Lounge Chair

The Ame Lounge Chair was conceived for Colony's group show, Pas de Deux, 2019, as a collaboration between Studio Paolo Ferrari and Hiroko Takeda.



Standard Materials:
COM, Metal

As Shown:
Pierre Frey Esteban Meringue,
Matte Black 01

Standard Metal Finishes:
Matte Black 01

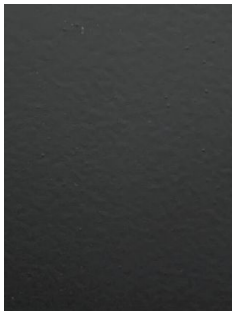
COM Requirements:
COM 6.75 Yards

Standard Dimensions:
41" W x 31" D x 28.5" H
Seat Height: 16"

Lead Time:
14-16 weeks

Studio Paolo Ferrari
Materials and Finishes

STANDARD METAL MATERIAL FINISHES
Custom materials & finish matching available.



Matte Black 01



Hammered Metal
01*



Polished Nickle 01*



Brushed Bronze 01*



Darkened Brushed
Bronze 01*