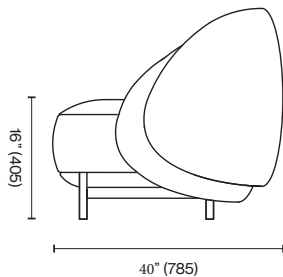
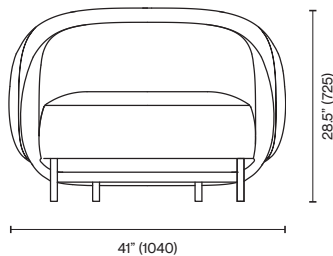


Studio Paolo Ferrari
Ame Lamy

Originally conceived for Colony’s group show, Pas de Deux, 2019, AME (the Japanese word for rain) marked the first collaboration between Studio Paolo Ferrari and Hiroko Takeda. AME Lamy is the second iteration from this dynamic alliance, and an homage to the inimitable Michèle Lamy. Inspired by the rich heritage of garment making and the origins of textiles, AME is characterized by properties inherent in the natural and technical, nodding to mino, an example of early Japanese rain gear. AME Lamy features soft curves in black wool upholstery with an outer layer clothed in an original hand-woven textile.



Standard Materials:
COM, Metal

As Shown:
Textile by Hiroko Takeda,
Maharam Nestle Hoax, Matte Black O1

Standard Metal Finishes:
Matte Black O1

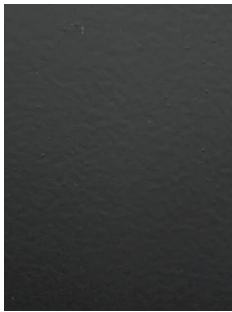
COM Requirements:
COM 6.75 Yards

Standard Dimensions:
41" W x 40" D x 28.5" H
Seat Height: 16"

Lead Time:
30 weeks

Studio Paolo Ferrari
Materials and Finishes

STANDARD METAL MATERIAL FINISHES
Custom materials & finish matching available.



Matte Black 01



Hammered Metal
01*



Polished Nickle 01*



Brushed Bronze 01*



Darkened Brushed
Bronze 01*