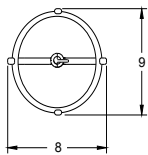
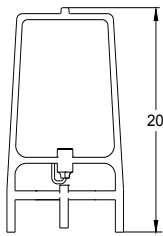


THOMAS YANG STUDIO

Tian Den - Piccola

The Tian Den lighting series is named after Taiwanese sky lanterns. A hand-sewn paper shade lays upon a structural wooden frame whose bamboo ribbing keeps the lantern's form while allowing it to become animated by a breeze or passing body. The Yame Kozo Hadaura paper absorbs daylight, revealing the frame and accentuating the vitality of the lamp when both lit and unlit.



As Shown:
Yame Kozo Hadaura Paper,
Rattan, Cherry, White
Ceramic

Standard Materials:
Wood, White Stone, Kozo
Paper, and Rattan

Standard Finishes:
Cherry, Maple, Cedar

Standard Dimensions:
8" L x 9" W x 20" H

Lead Time:
10 - 12 weeks

Thomas Yang Studio

Tian Den - Piccola

Lamping:
G16 3W Tala

Lamp Quantity:
1

Installation - Standard
Plug-in, US Outlet, 12ft Cord

Brightness:
210 Lumens
CCT
2700k (warm white)

Indoor/Outdoor
Indoor Only

Dimming
Stone Switch

STANDARD STONE SWITCH FINISHES
Custom materials & finish matching available.



River Stone

Thomas Yang Studio
Materials and Finishes

STANDARD WOOD MATERIAL FINISHES
Custom materials & finish matching available.



Cherry



Maple



Cedar

STANDARD LANTERN FINISHES
Custom materials & finish matching available.



Kozo Paper