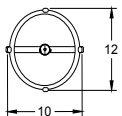
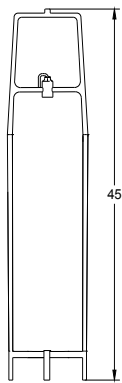


THOMAS YANG STUDIO

Tian Den - Granda

The Tian Den lighting series is named after Taiwanese sky lanterns. A hand-sewn paper shade lays upon a structural wooden frame whose bamboo ribbing keeps the lantern's form while allowing it to become animated by a breeze or passing body. The Yame Kozo Hadaura paper absorbs daylight, revealing the frame and accentuating the vitality of the lamp when both lit and unlit.



As Shown:

Yame Kozo Hadaura Paper,  
Rattan, Cherry, White  
Ceramic

Standard Materials:

Wood, White Stone, Kozo  
Paper, and Rattan

Standard Finishes:

Cherry, Maple, Cedar

Standard Dimensions:

10" L x 12" W x 45" H

Lead Time:

16 - 18 weeks

Thomas Yang Studio

Tian Den - Granda

Lamping:  
G16 3W Tala

Lamp Quantity:  
1

Installation - Standard  
Plug-in, US Outlet, 12ft Cord

Brightness:  
210 Lumens  
CCT  
2700k (warm white)

Indoor/Outdoor  
Indoor Only

Dimming  
Stone Switch

STANDARD STONE SWITCH FINISHES  
Custom materials & finish matching available.



River Stone

Thomas Yang Studio  
Materials and Finishes

STANDARD WOOD MATERIAL FINISHES  
Custom materials & finish matching available.



Cherry



Maple



Cedar

STANDARD LANTERN FINISHES  
Custom materials & finish matching available.



Kozo Paper