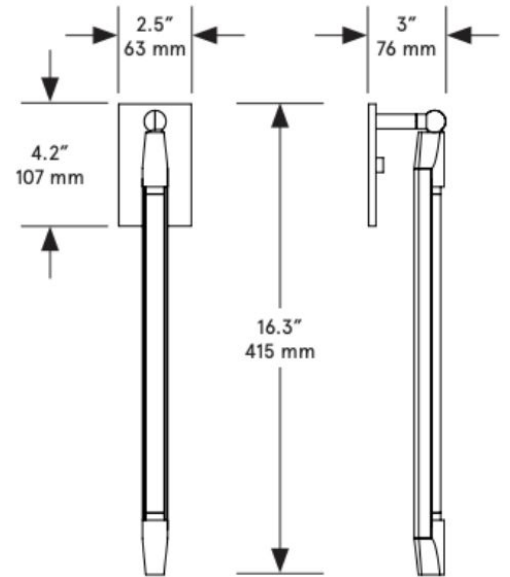


# CO/ONY



Bec Brittain

Shy Sconce 1'

## Standard Materials

Brass (Diffusers available at additional cost)

## Dimensions:

2.5"W x 3"D x 16.3"L

## Lead Time:

14 - 16 weeks

## Weight:

2.5 lb

## LED Illumination:

24 VDC T5 LED tube

0-10V dimming

2700 Kelvin 90 CRI

# CO/ONY

**Electrical:**

3 Watt 240

Lumens 110 - 240 VAC 277

VAC upon request

**Standard Installation:**

Locally Mounted Driver, refer to installation diagram. Remote Mounted Driver, backplate mounts directly to standard US single gang box.

**Backplate :**

Locally Mounted Driver

3"W x 12.5"H, matching metal finish

Remote Mounted Driver

3"W x 4.2"H, matching metal finish

*Please inquire for detailed electrical specs. ETL listed to UL, CE and CSA standards, suitable for damp locations.*

# CO/ONY

## BEC BRITAIN

### Materials & Finishes

*Custom materials & finishes matching available*

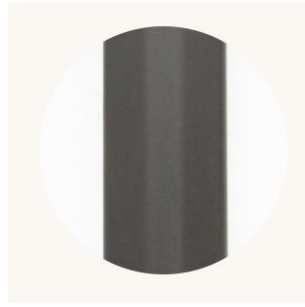
#### STANDARD METAL FINISHES



Brushed Brass



Nickel Brass Contrast

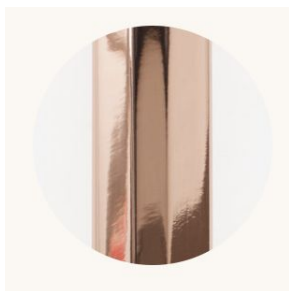


Bronze

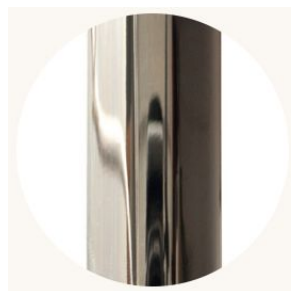


Satin Nickel

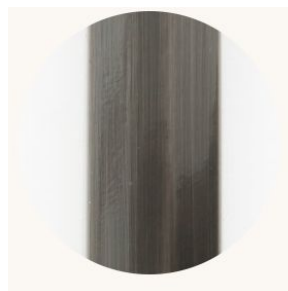
#### Special Order Finishes



Polished Copper



Polished Nickel



Dark Pewter



Polished Black Nickel

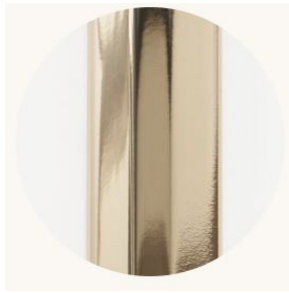
# CO/ONY

## BEC BRITAIN

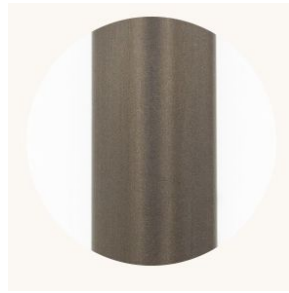
### Materials & Finishes

*Custom materials & finishes matching available*

Custom order Finishes cont.

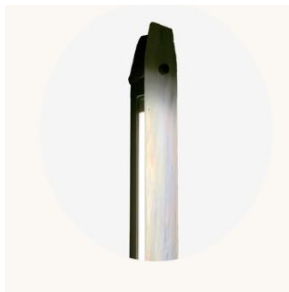


Polished Brass

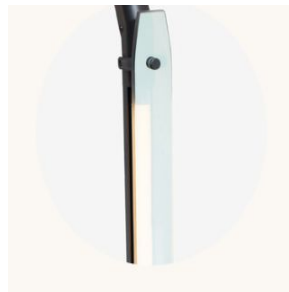


Medium Antique Brass

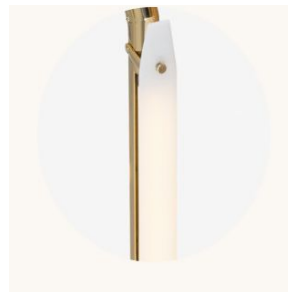
Diffuser Glass Finishes



Iridescent glass



Two Way Mirror



White Sandblast Glass