

CO/ONY



BEC BRITTAIN

Expo

Standard Materials:

Brushed Brass Oil-Rubbed

Bronze Satin Nickel Nickel

Brass Contrast

Standard Dimensions:

67 inch x 29 inch x 27 inch H 1700 mm x

735 mm x 685 mm H

Lead Time:

14-16 weeks

Weight:

26 lbs.

LED Illumination:

24 VDC T5

LED tube 2700 Kelvin

90 CRI

CO/ONY

Electrical:

Wattage: 24
Watt Lumens: 1920
Lumens 110 - 240
VAC 277
VAC upon request

Standard Installation:

Locally mounted driver
120V Dimming: C-L (Lutron) switching 240V
Dimming: 0-10V wireless (Lutron Pico)
Canopy: 8 x 1.625 inch (203 x 41 mm)
round in matching metal finish

Alternate Installation:

Remotely mounted driver
120V Dimming: C-L (Lutron) switching 240V
Dimming: 0-10V hardwired
Canopy: 5 x 0.25 inch (127 x 6 mm)
round in matching metal finish (Please inquire
for detailed electrical specs)

Suspension:

1/8 IP all-thread stem clad in brass tubing with
matching metal finish up to 35 inch length
included with fixture. Length up to 95 inches
available for additional cost.

*Please inquire for detailed electrical specs.
ETL listed to UL, CE and CSA standards, suitable for damp locations.*

CO/ONY

BEC BRITAIN

Materials & Finishes

Custom materials & finishes matching available

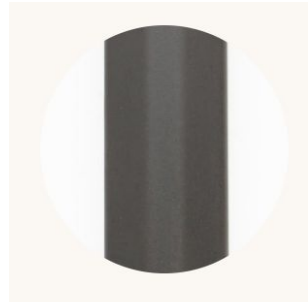
STANDARD METAL FINISHES



Brushed Brass



Nickel Brass Contrast

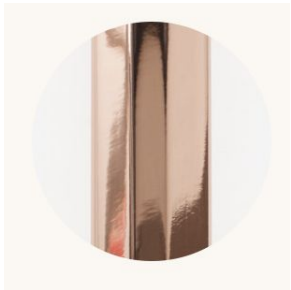


Bronze

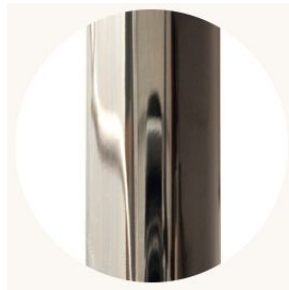


Satin Nickel

Special Order Finishes



Polished Copper



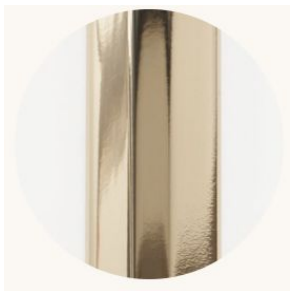
Polished Nickel



Dark Pewter



Polished Black Nickel



Polished Brass