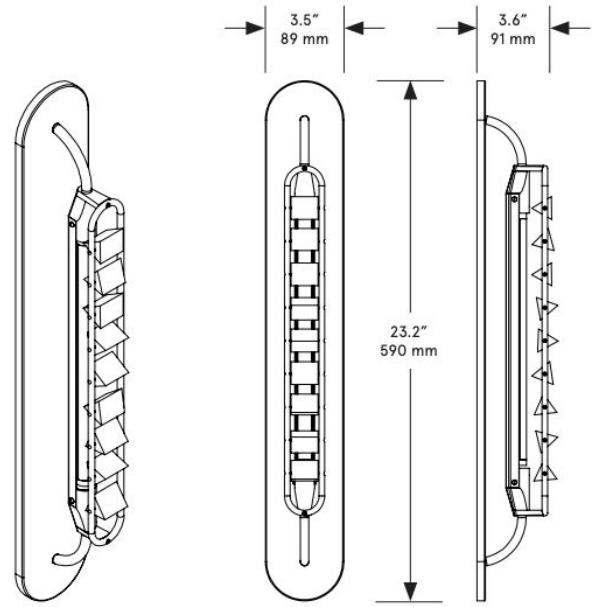


CO/ONY



Phaedra Sconce 23

BEC BRITTAIN

Phaedra Sconce 23", 34"

Standard Materials:

finished brass, clear glass prisms

Standard Dimensions:

23.2" x 3.5" x 3.6"

33.5" x 3.5" x 3.6"

Projection: 851 mm x 89mm x 91mm projection

Lead Time:

8-10 weeks standard finish

14-16 weeks Special Order

Weight:

23: 9lb / 4.1 kg

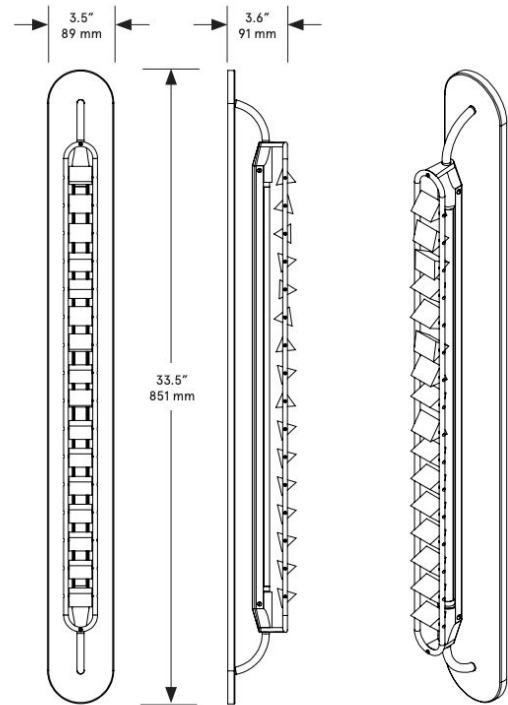
34: 13lb / 5.9kg

LED Illumination:

24VDC T5 LED tube

2700 Kelvin

90 CRI



Phaedra Sconce 34

CO/ONY

Electrical:

3/6 Watt

Lumens: 240/480 Lumens

110 - 240 VAC

277 VAC upon request

0-10 Vac Upon Request

Standard Installation:

Remote: Backplate mounts directly to standard US single gang box

Local: refer to installation diagram

Backplate:

23: 3.5 x 23.2 in./ 89 x 590 mm in matching metal finish

34: 3.5 x 33.5in. / 89 x 851 mm in matching metal finish

Suspension:

1/8 IP all-thread stem clad in brass tubing with matching metal finish up to 35 inch length included with fixture. Length up to 95 inches available for additional cost.

Please inquire for detailed electrical specs.

ETL listed to UL, CE and CSA standards, suitable for damp locations.

CO/ONY

BEC BRITAIN

Materials & Finishes

Custom materials & finishes matching available

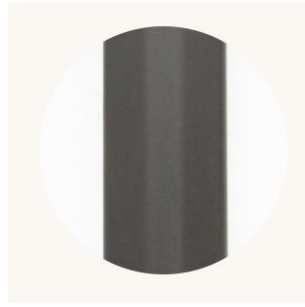
STANDARD METAL FINISHES



Brushed Brass



Nickel Brass Contrast

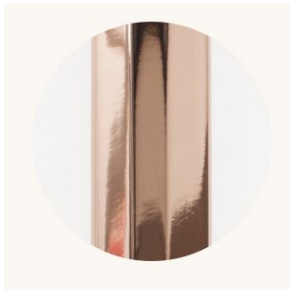


Oil Rubbed Bronze

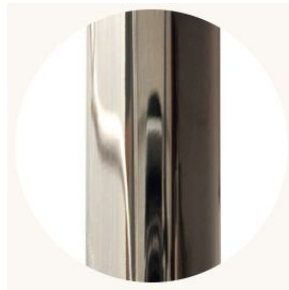


Satin Nickel

Special Order Finishes



Polished Copper



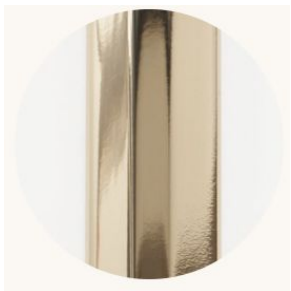
Polished Nickel



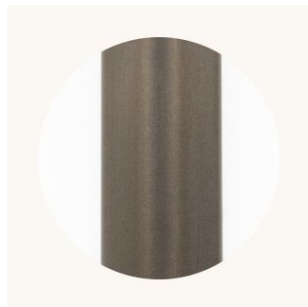
Dark Pewter



Polished Black Nickel



Polished Brass



Medium Antique Brass