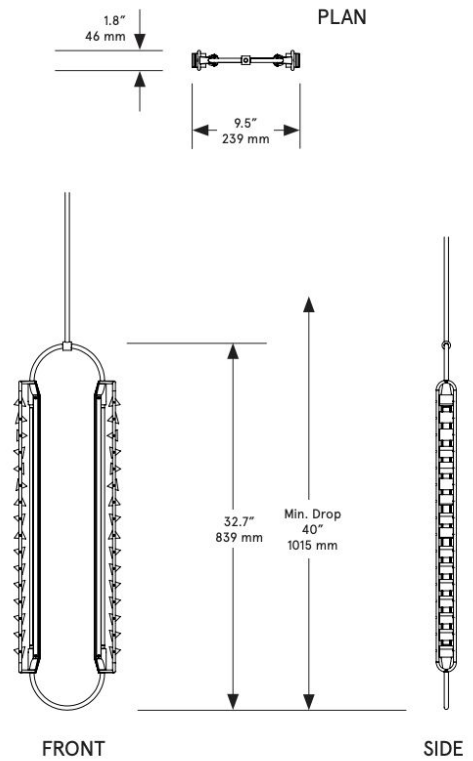


CO/ONY



BEC BRITTAIN

Phaedra Pendant

Standard Materials:

Brushed brass, glass prisms

Standard Dimensions:

22" - 9.4"L x 1.8"W x 22.4"H

33" - 9.4"L x 1.8"W x 32.7"

Lead Time:

14-16 weeks

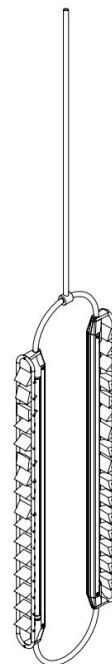
Weight:

10 lbs. / 4.5 kg

LED Illumination:

24VDC T5 LED tube 2700 Kelvin

90 CRI



CO/ONY

Electrical:

6 Watt

Lumens: 480 Lumens

110 - 240 VAC

277 VAC upon request

Standard Installation:

Locally mounted driver

Dimming: 210V (Lutron) switching

240V Dimming: 0-10V wireless (Lutron Pico)

Canopy: 8 x 1.6255 inch (203 x 41 mm)

round in matching metal finish

Alternate Installation:

Remotely mounted driver

120V Dimming: 0-10V hardwired

240V Dimming: 0-10V hardwired

Canopy: 5 x 0.25 inch (127 x 6 mm) round in
matching metal finish

Please inquire for detailed electrical specs

Suspension:

1/8 IP all-thread stem clad in brass tubing with
matching metal finish up to 35 inch length
included with fixture. Length up to 95 inches
available for additional cost.

Please inquire for detailed electrical specs.

ETL listed to UL, CE and CSA standards, suitable for damp locations.

CO/ONY

BEC BRITAIN

Materials & Finishes

Custom materials & finishes matching available

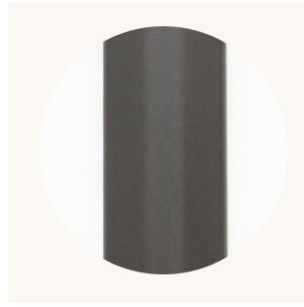
STANDARD METAL FINISHES



Brushed Brass



Nickel Brass Contrast

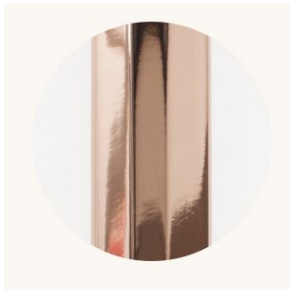


Oil Rubbed Bronze

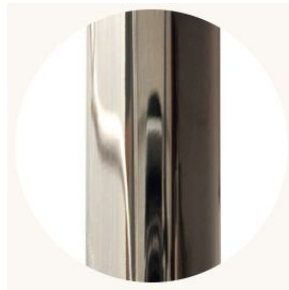


Satin Nickel

Special Order Finishes



Polished Copper



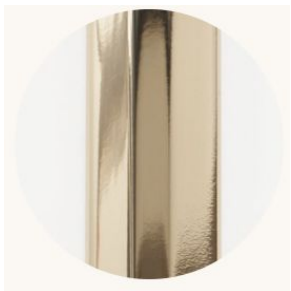
Polished Nickel



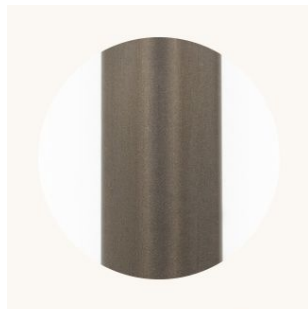
Dark Pewter



Polished Black Nickel



Polished Brass



Medium Antique Brass