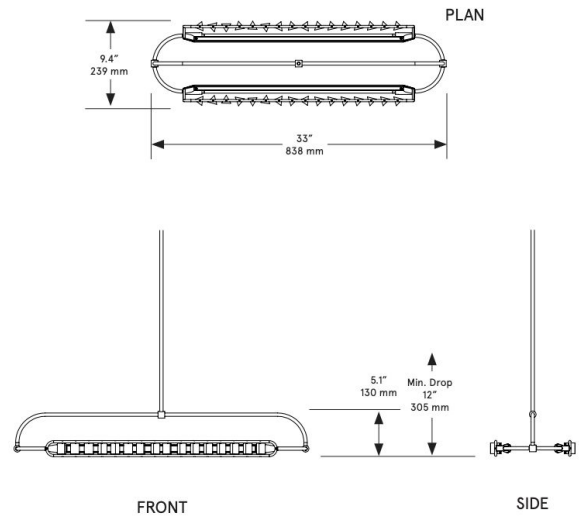


CO/ONY



BEC BRITTAIN

Phaedra Horizontal

Standard Materials:

finished brass, clear glass prisms

Standard Dimensions:

33" x 9.4 x 5.1"H

838mm x 239mm x 130mm H

Lead Time:

14-16 weeks

Weight:

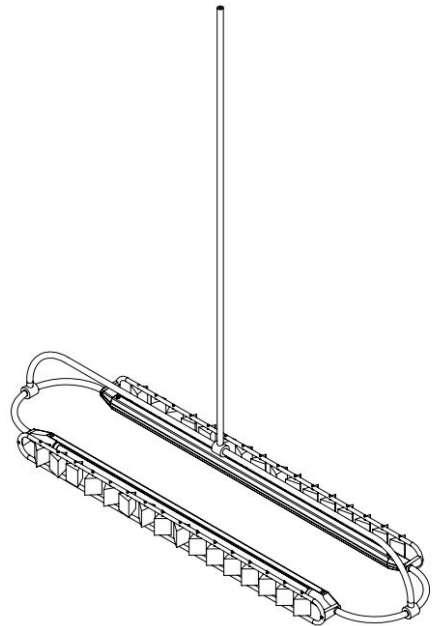
12lb / 5.4 kg

LED Illumination:

24VDC T5 LED tube

2700 Kelvin

90 CRI



CO/ONY

Electrical:

12 Watt
Lumens: 960 Lumens
110 - 240 VAC
277 VAC upon request

Standard Installation:

Locally mounted driver
120V Dimming: C.L (Lutron) switching
240V Dimming: 0-10V wireless (Lutron Pico)
Canopy: 8 x 1.625" (203 x 41mm) round in matching metal finish

Alternate Installation:

Remotely Mounted Driver:
120V Dimming: C.L (Lutron) switching
240V Dimming: 0-10V wireless (Lutron Pico)
Canopy: 8 x 1.625" (203 x 41mm) round in matching metal finish

Suspension:

1/8 IP all-thread stem clad in brass tubing with matching metal finish up to 35 inch length included with fixture. Length up to 95 inches available for additional cost.

*Please inquire for detailed electrical specs.
ETL listed to UL, CE and CSA standards, suitable for damp locations.*

CO/ONY

BEC BRITAIN

Materials & Finishes

Custom materials & finishes matching available

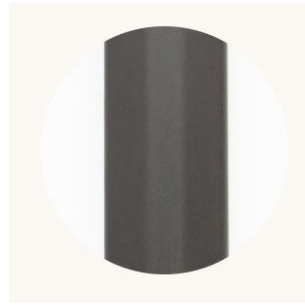
STANDARD METAL FINISHES



Brushed Brass



Nickel Brass Contrast

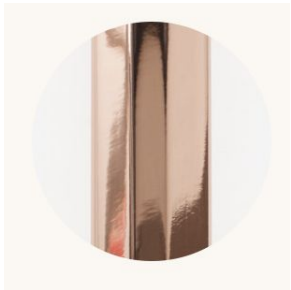


Oil Rubbed Bronze

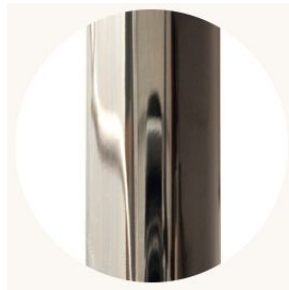


Satin Nickel

Special Order Finishes



Polished Copper



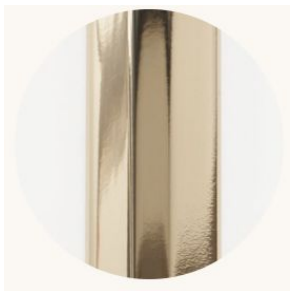
Polished Nickel



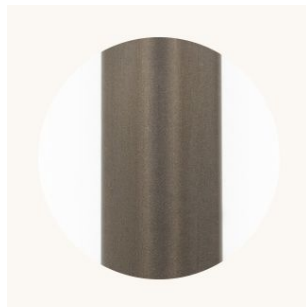
Dark Pewter



Polished Black Nickel



Polished Brass



Medium Antique Brass