

CO/ONY



ERICKSON AESTHETICS

EAE Lounge Chair - Black and White

Standard Materials:

Copper, Brass, Steel, Leather, Oak, Ash, Walnut, Holly, Teak, Rosewood, COL available

Standard Dimensions:

28"W x 31"D x 28"H

COL Requirements: 1 - 2 hides (based on leather type)

Lead Time:

16-20 Weeks

CO/ONY

ERICKSON AESTHETICS

Materials & Finishes

Custom materials & finishes matching available

STANDARD WOOD FINISHES



Oak



Cerused Oak



Walnut



Ash



Holly



Teak



Rosewood

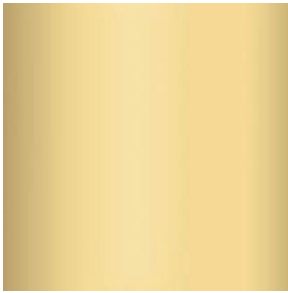
CO/ONY

ERICKSON AESTHETICS

Materials & Finishes

Custom materials & finishes matching available

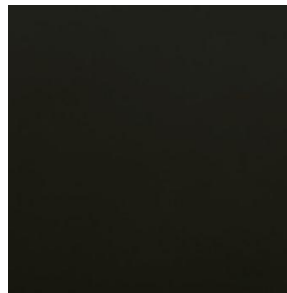
STANDARD METAL FINISHES



Brass



Copper



Steel

STANDARD TEXTILE



Black Horween Leather