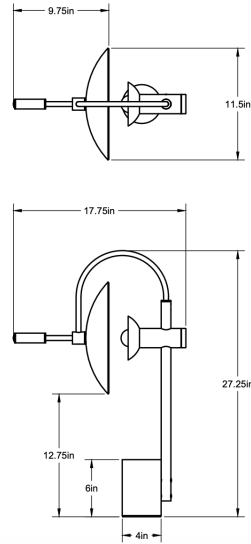


CO/ONY



ALLIED MAKER Aperture Table Lamp

Standard Materials:

Brass, Glass and Wood

Dimensions: 17.75”L x 11.5”W x 27.25”H

Lead Time: 12-14 weeks

Weight: 29.25 lbs

Metal Finishes:

Available in all standard metal finishes

Glass Finishes:

Opal and Skytek

Wood Finishes:

Available in all standard wood finishes

Brightness: 275 Lumens

Lamping:

E12 or E14 Screw Base

Type G50 Lamps

Bulb Included (120V USA):

Tala 5W Globe Bulb

Bulb Included (240V EU):

Tala 5W Globe 240V Bulb

Mounting: Universal

Dimming: LED+

*Please inquire for detailed electrical specs.
cUL Damp Locations certified.*

CO/ONY

Allied Maker

Materials & Finishes

Custom materials & finish matching available

STANDARD METAL FINISHES



Blackened Brass



Brass



Maker Black



Raw Brass



Gradient



Bronze



Verdegris



Stonewashed



Nickel



Sandblasted Grey

CO/ONY

Allied Maker

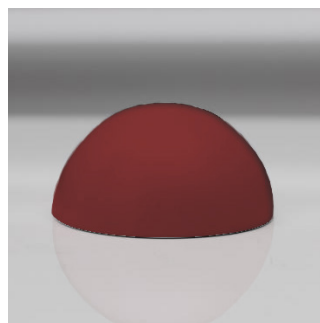
Materials & Finishes

Custom materials & finish matching available

STANDARD METAL FINISHES



Flat Black



Red Sand

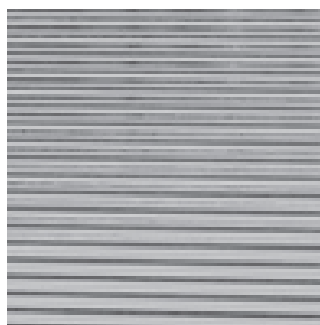


Porcelain White



Matte White

STANDARD GLASS FINISHES



Skytek Glass



Opal Glass

CO/ONY

Allied Maker

Materials & Finishes

Custom materials & finish matching available

STANDARD WOOD FINISHES



Oxidized Walnut



Black Walnut



Bleached Walnut



White Oak



American Ash



Bleached Oak



Bleached Ash



Silver Oak



Oxidized Oak



Flame Blackened Oak



Blackened Ash