

# CO/ONY



## GRAIN Ripple Sconce

**Standard Materials:** Copper

**Dimensions:** 4.875"Ø x 2"H

**Lead Time:** 10-12 weeks

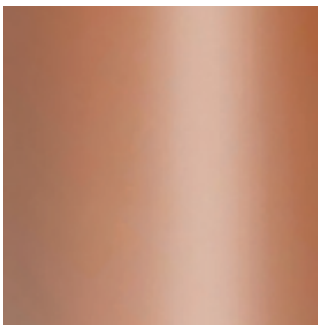
# CO/ONY

## Grain

### Materials & Finishes

*Custom materials & finish matching available*

#### STANDARD METAL



Polished Copper