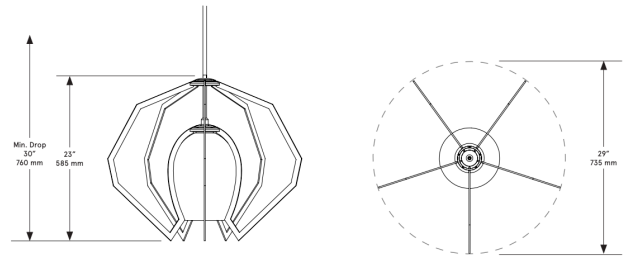


CO/ONY



BEC BRITTAIN

Vise

Standard Materials: Brass and Glass

Dimensions: 29"Ø x 23"H

Lead Time: 14-16 weeks

Weight: 24lb

Halogen Illumination:

MR16 12VAC Bulb

3000 Kelvin

Electrical:

50 Watt

1220 Lumens

Input Voltage:

110 - 240 VAC

277 VAC Upon Request

Canopy:

Local - 5"Ø x 1.5"D, matching finish

Remote - 5"Ø x .25"D, matching finish

Suspension:

1/8" IP all-thread stem clad in brass tubing with matching metal finish up to 35" length included with fixture. Length up to 95" available for additional cost.

*Please inquire for detailed electrical specs.
ETL listed to UL, CE and CSA standards, suitable for damp locations.*

CO/ONY

Bec Brittain

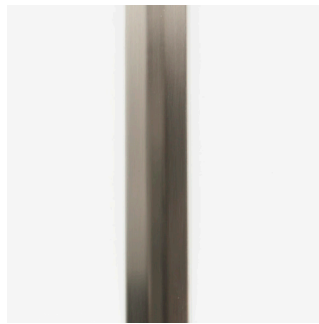
Materials & Finishes

Custom materials & finish matching available

STANDARD METAL FINISHES*



Brushed Brass



Satin Nickel

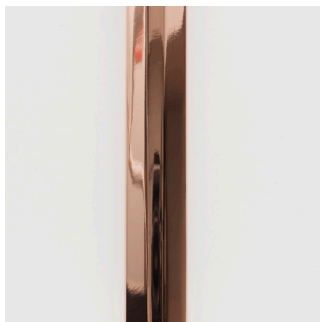


Oil Rubbed Bronze



Nickel Brass Contrast

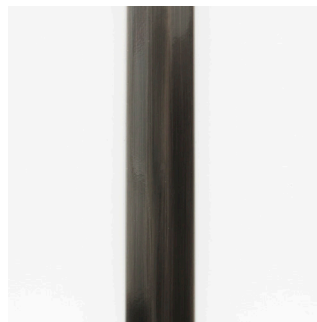
SPECIAL FINISHES - 10% UPCHARGE



Polished Copper



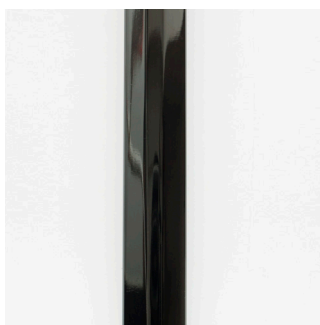
Medium Antique Brass



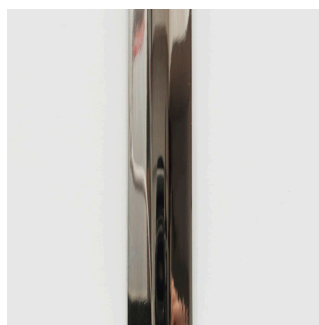
Dark Pewter



Polished Brass



Polished Black Nickel



Polished Nickel

CO/ONY

Bec Brittain

Materials & Finishes

Custom materials & finish matching available

WISE GLASS



Tesnus (Apricot to Blue)



Lanikai (Apricot to Green)



Big Sur (Grey Green to Gold)



Miami