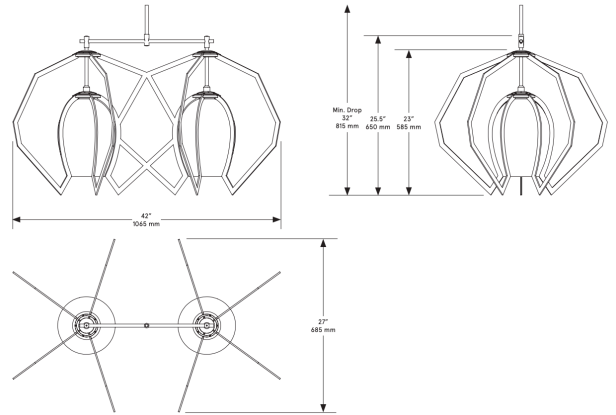


# CO/ONY



## BEC BRITTAIN Twin Vise

**Standard Materials:** Brass and Glass

**Dimensions:** 42"L x 27"W x 25.5"H

**Lead Time:** 14-16 weeks

**Weight:** 50lb

**Halogen Illumination:**

MR16 12VAC Bulb

3000 Kelvin

**Electrical:**

100 Watt

2440 Lumens

**Input Voltage:**

110 - 240 VAC

277 VAC Upon Request

**Canopy:**

Local - 5.5"Ø x 1.5"D, matching finish

Remote - 5"Ø x .25"D, matching finish

**Suspension:**

1/8" IP all-thread stem clad in brass tubing with matching metal finish up to 35" length included with fixture. Length up to 95" available for additional cost.

*Please inquire for detailed electrical specs.  
ETL listed to UL, CE and CSA standards, suitable  
for damp locations.*

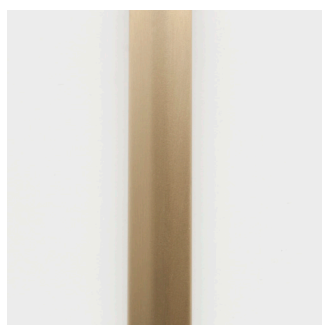
# CO/ONY

## Bec Brittain

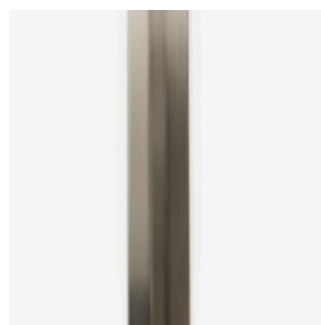
### Materials & Finishes

Custom materials & finish matching available

#### STANDARD METAL FINISHES\*



Brushed Brass



Satin Nickel

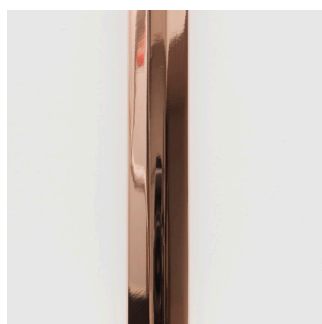


Oil Rubbed Bronze



Nickel Brass Contrast

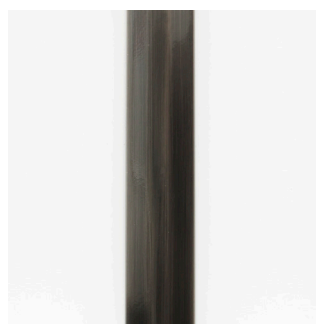
#### SPECIAL FINISHES - 10% UPCHARGE



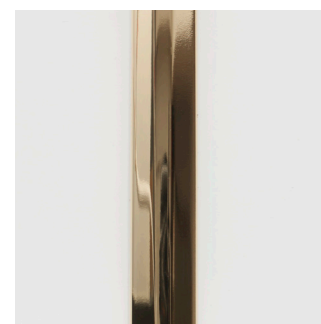
Polished Copper



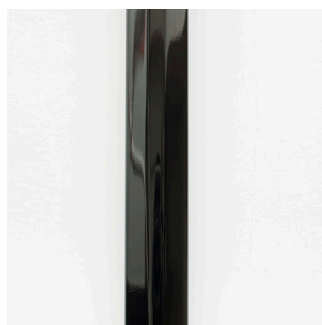
Medium Antique Brass



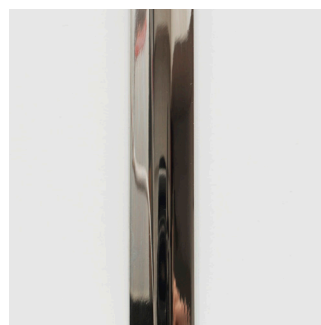
Dark Pewter



Polished Brass



Polished Black Nickel



Polished Nickel

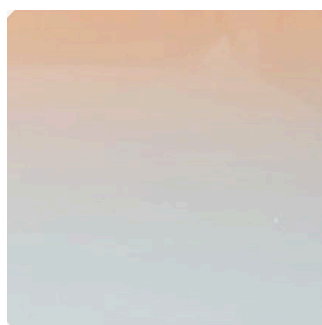
# CO/ONY

## Bec Brittain

### Materials & Finishes

*Custom materials & finish matching available*

#### WISE GLASS



Tesnus (Apricot to Blue)



Lanikai (Apricot to Green)



Big Sur (Grey Green to Gold)



Miami