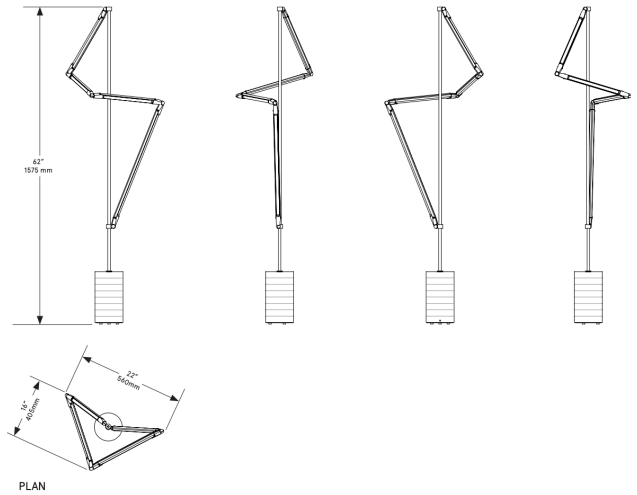


CO/ONY



BEC BRITTAIN Helix Floor

Standard Materials: Brass and Stone

Dimensions: 22"L x 16"W x 62"H

Lead Time: 14-16 weeks

Weight: 28 lb

LED Illumination:

24 VDC T5 LED tube

2700 Kelvin

90 CRI

Electrical:

15 Watt

1200 Lumens

110 - 240 VAC

Wiring:

Wired with one floor switch and one plug-in transformer (3" x 2" x 1.25"). Dimmer available at additional cost.

Please inquire for detailed electrical specs.

ETL listed to UL, CE and CSA standards, suitable for damp locations.

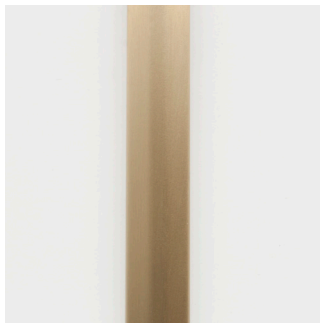
CO/ONY

Bec Brittain

Materials & Finishes

Custom materials & finish matching available

STANDARD METAL FINISHES*



Brushed Brass



Satin Nickel

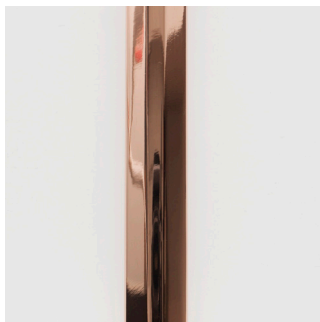


Oil Rubbed Bronze



Nickel Brass Contrast

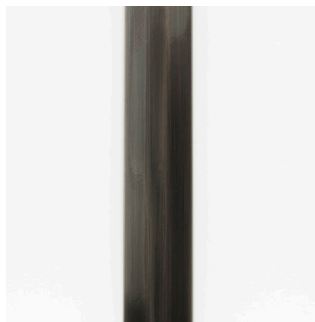
SPECIAL FINISHES - 10% UPCHARGE



Polished Copper



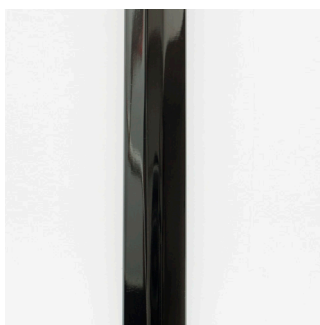
Medium Antique Brass



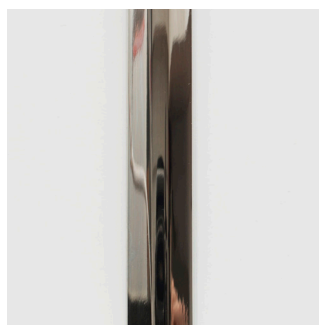
Dark Pewter



Polished Brass



Polished Black Nickel



Polished Nickel

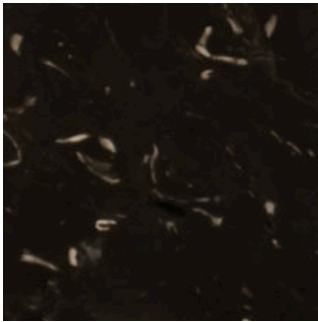
CO/ONY

Bec Brittain

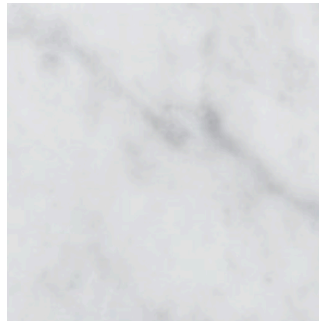
Materials & Finishes

Custom materials & finish matching available

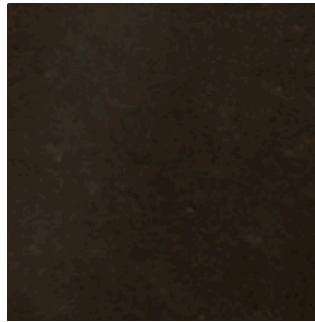
HELIX MARBLE



Black Marble



White Marble



Absolute Black Granite