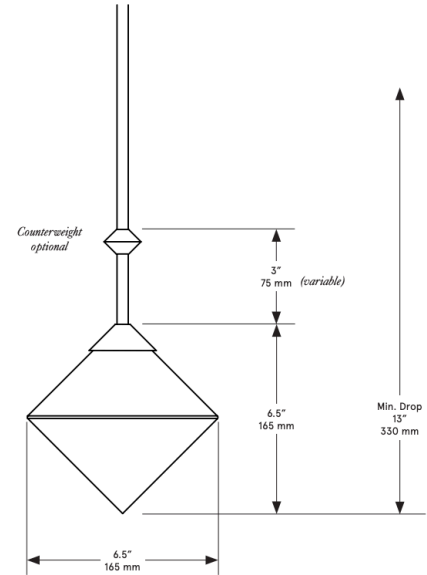


# CO/ONY



## BEC BRITTAIN FKA Themis Pendant

**Standard Materials:** Brass and Glass

**Dimensions:** 6.5"Ø x 6.5"H

**Lead Time:** 14-16 weeks

**Weight:** 4lb

**Canopy:**

5"Ø x .25"D, matching finish

**LED Illumination:**

G9 LED Bulb

ELV Dimming

110-220 VAC

2.5 Watt

240 Lumens

2700 Kevlin

220-240 VAC

4 Watt

250 Lumens

3000 Kelvin

**Electrical:**

110-120 VAC

5 Watt

480 Lumens

220-240 VAC

8 Watt

500 Lumens

**Wiring:**

Direct 120/240 VAC line voltage connection.

Requires an Electronic Low-Voltage dimmer switch.

**Suspension:**

1/8" IP all-thread stem clad in brass tubing with matching metal finish up to 35" length included with fixture. Length up to 95" available for additional cost.

*Please inquire for detailed electrical specs.*

*ETL listed to UL, CE and CSA standards, suitable for damp locations.*

# CO/ONY

## Bec Brittain

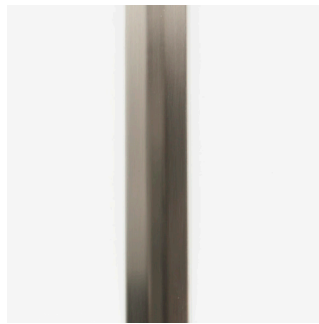
### Materials & Finishes

Custom materials & finish matching available

#### STANDARD METAL FINISHES\*



Brushed Brass



Satin Nickel

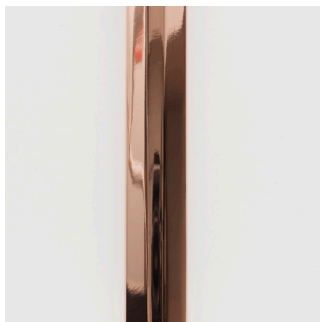


Oil Rubbed Bronze



Nickel Brass Contrast

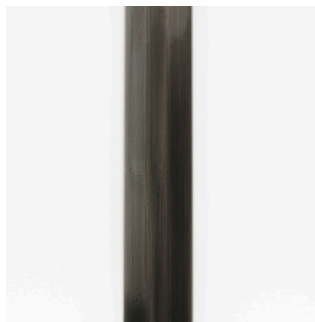
#### SPECIAL FINISHES - 10% UPCHARGE



Polished Copper



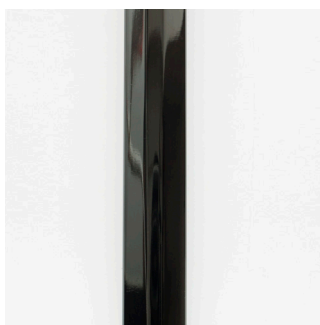
Medium Antique Brass



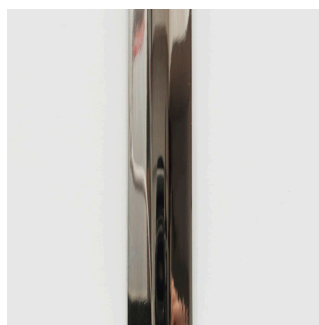
Dark Pewter



Polished Brass



Polished Black Nickel



Polished Nickel

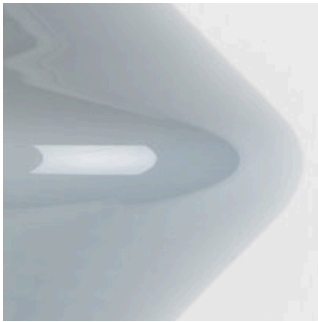
# CO/ONY

## Bec Brittain

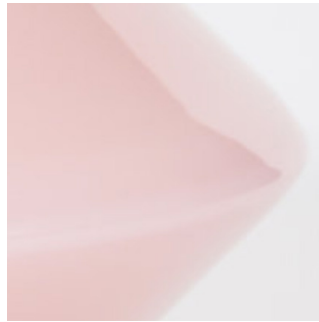
### Materials & Finishes

*Custom materials & finish matching available*

#### THEMIS GLASS



Grey



Soft Pink



Ivory

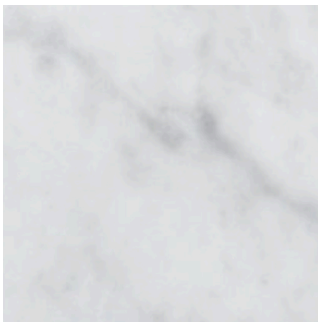


White



Clear

#### THEMIS MARBLE



White Marble