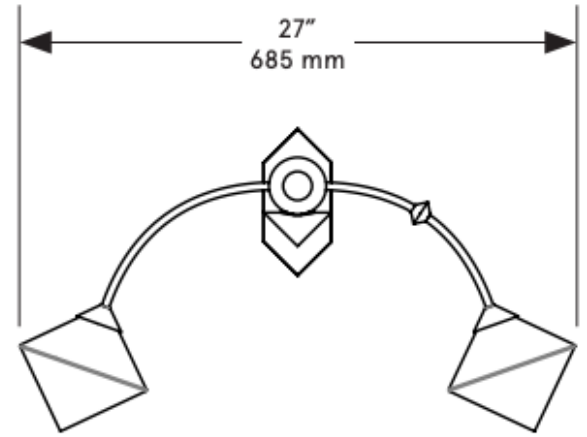


CO/ONY



BEC BRITTAIN FKA Themis 27 Sconce

Standard Materials:

Brass, Marble and Glass

Dimensions: 27"L x 16"W x 8.5"D

Lead Time: 14-16 weeks

Weight: 7.5lb

LED Illumination:

G9 LED Bulb

ELV Dimming

110-220 VAC

2.5 Watt

240 Lumens

2700 Kevlin

220-240 VAC

4 Watt

250 Lumens

3000 Kelvin

Electrical:

110-120 VAC

5 Watt

480 Lumens

220-240 VAC

8 Watt

500 Lumens

Installation:

Mounts directly to standard US single gang box.

Wiring:

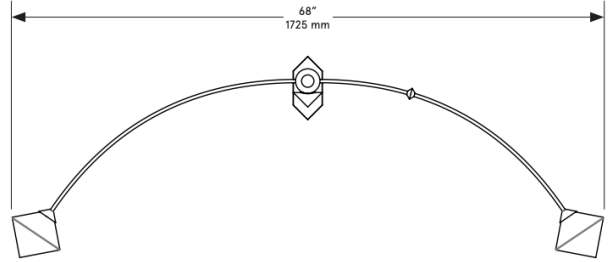
Direct 120/240 VAC line voltage connection.

Requires an Electronic Low-Voltage dimmer switch.

Please inquire for detailed electrical specs.

ETL listed to UL, CE and CSA standards, suitable for damp locations.

CO/ONY



BEC BRITTAIN FKA Themis 68 Sconce

Standard Materials:

Brass, Marble and Glass

Dimensions: 68"L x 16"W x 8.5"D

Lead Time: 14-16 weeks

Weight: 8lb

LED Illumination:

G9 LED Bulb

ELV Dimming

110-220 VAC

2.5 Watt

240 Lumens

2700 Kevlin

220-240 VAC

4 Watt

250 Lumens

3000 Kelvin

Electrical:

110-120 VAC

5 Watt

480 Lumens

220-240 VAC

8 Watt

500 Lumens

Installation:

Mounts directly to standard US single gang box.

Wiring:

Direct 120/240 VAC line voltage connection.

Requires an Electronic Low-Voltage dimmer switch.

Please inquire for detailed electrical specs.

ETL listed to UL, CE and CSA standards, suitable for damp locations.

CO/ONY

Bec Brittain

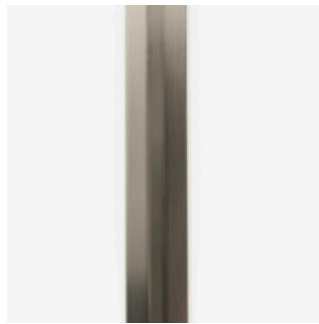
Materials & Finishes

Custom materials & finish matching available

STANDARD METAL FINISHES*



Brushed Brass



Satin Nickel

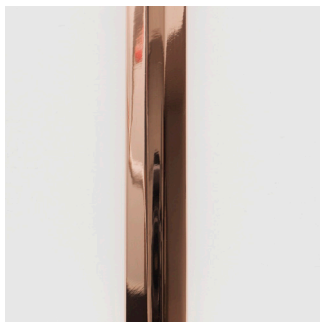


Oil Rubbed Bronze



Nickel Brass Contrast

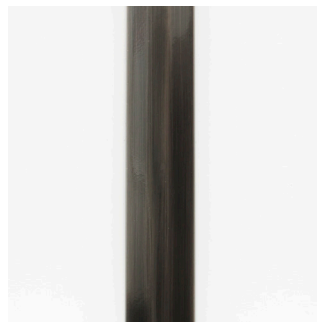
SPECIAL FINISHES - 10% UPCHARGE



Polished Copper



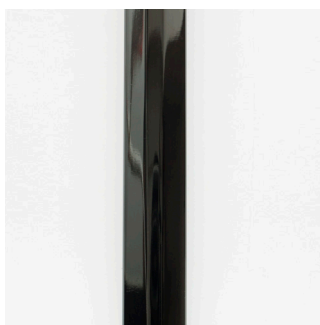
Medium Antique Brass



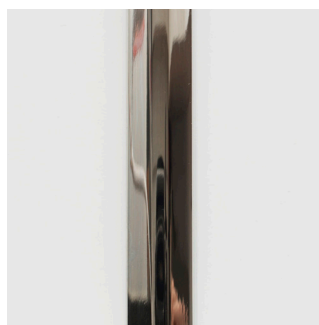
Dark Pewter



Polished Brass



Polished Black Nickel



Polished Nickel

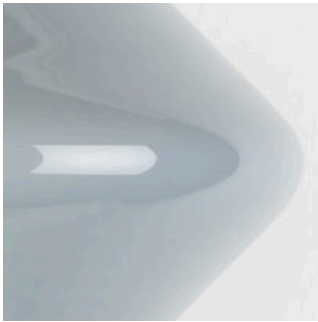
CO/ONY

Bec Brittain

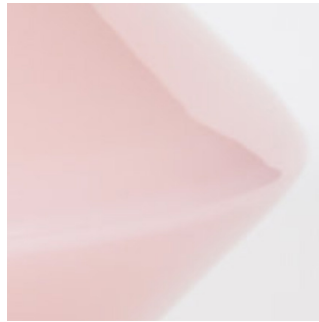
Materials & Finishes

Custom materials & finish matching available

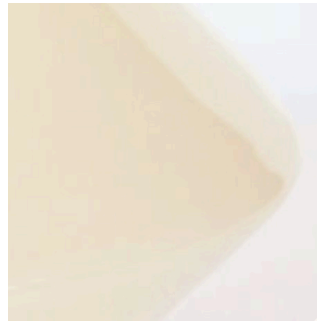
THEMIS GLASS



Grey



Soft Pink



Ivory

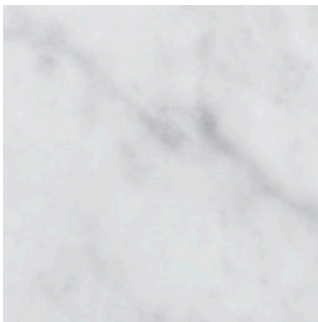


White



Clear

THEMIS MARBLE



White Marble