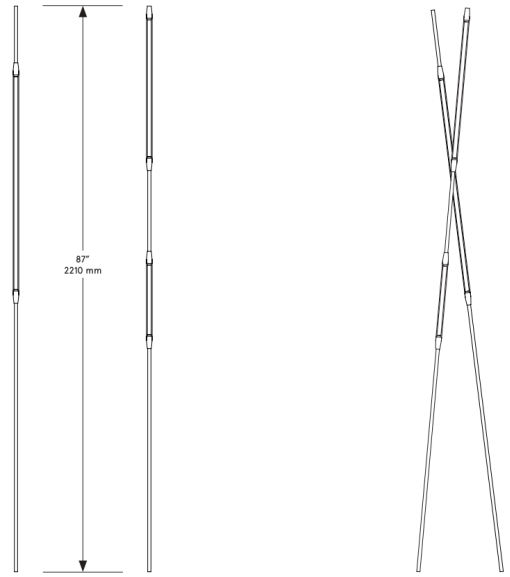


# CO/ONY



## BEC BRITTAIN Shy Beam 01/02 Pair

**Standard Materials:** Brass  
Diffusers available at additional cost

**Dimensions:** 1"Ø x 87"H  
**Lead Time:** 14-16 weeks  
**Weight:** 8 lb / pair

**LED Illumination:**  
24 VDC T5 LED tube  
0-10V dimming  
2700 Kelvin  
90 CRI

**Electrical:**  
18W / pair  
1440 Lumens / pair  
120 - 240 VAC

**Installation:**  
Two wall brackets in matching finish.

**Wiring:**  
Beams wired as a pair with one floor switch and one plug-in transformer (2" x 3" x 1.25"). Dimmer available at additional cost.

*Please inquire for detailed electrical specs.  
ETL listed to UL, CE and CSA standards, suitable for damp locations.*

# CO/ONY

## Bec Brittain

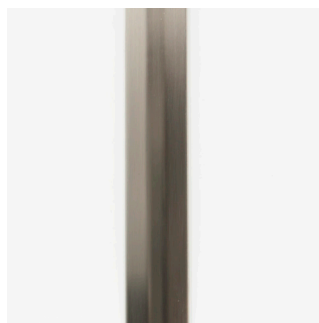
### Materials & Finishes

Custom materials & finish matching available

#### STANDARD METAL FINISHES



Brushed Brass



Satin Nickel

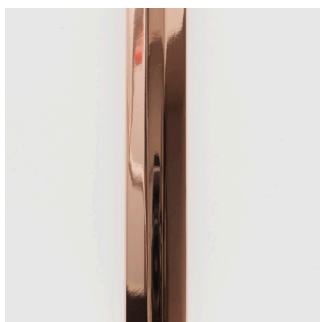


Oil Rubbed Bronze



Nickel Brass Contrast

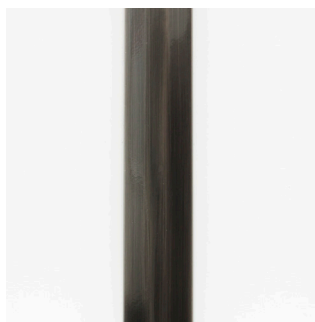
#### SPECIAL FINISHES - 10% UPCHARGE



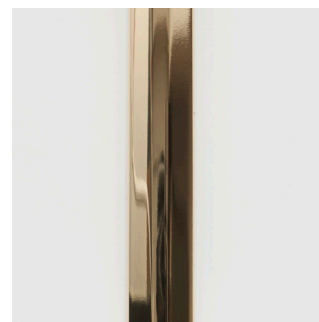
Polished Copper



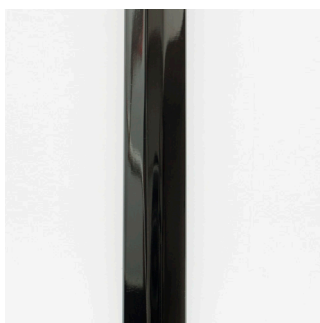
Medium Antique Brass



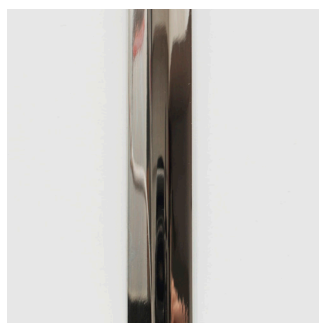
Dark Pewter



Polished Brass



Polished Black Nickel



Polished Nickel

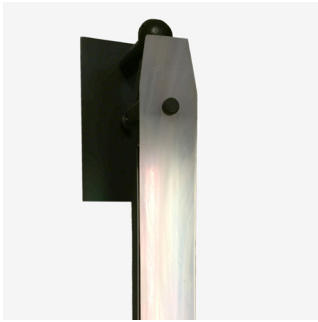
# CO/ONY

## Bec Brittain

### Materials & Finishes

Custom materials & finish matching available

#### SHY DIFFUSER GLASS FINISHES (ADDITIONAL COST)



Iridescent Glass



Two-way Mirror



White Sandblast Glass