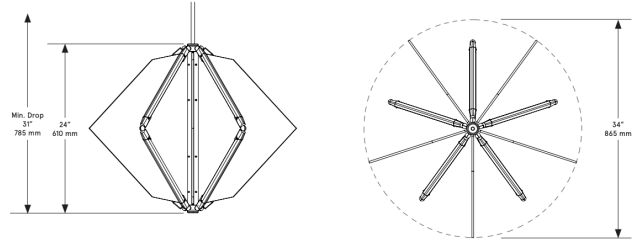


CO/ONY



BEC BRITTAIN Echo 1

Standard Materials: Brass, Glass and Mirror

Dimensions: 34"Ø x 24"H

Lead Time: 14-16 weeks

Weight: 41 lb

LED Illumination:

24 VDC T5 LED tube

2700 Kelvin

90 CRI

Electrical:

30 Watt

2400 Lumens

110 - 240 VAC

277 VAC upon request

Standard Installation:

Locally Mounted Driver

120V C-L switching dimming (Lutron)

8"Ø x 1.625"D canopy, matching finish

240V 0-10V wireless dimming (Lutron Pico)

9.25"Ø x 1.625"D canopy, matching finish

Alternate Installation:

Remotely Mounted Driver

120V C-L switching dimming (Lutron)

240V 0-10V hardwired dimming

5"Ø x .25"D Canopy, matching finish

Suspension:

1/8" IP all-thread stem clad in brass tubing with matching metal finish up to 35" length included with fixture. Length up to 95" available for additional cost.

Please inquire for detailed electrical specs.

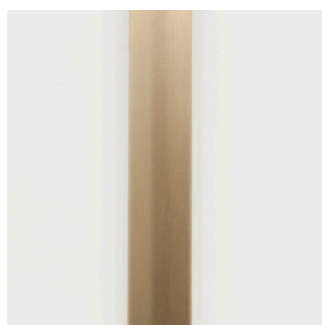
CO/ONY

Bec Brittain

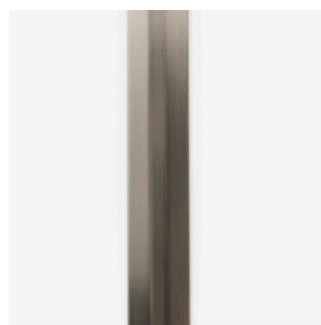
Materials & Finishes

Custom materials & finish matching available

STANDARD METAL FINISHES*



Brushed Brass



Satin Nickel

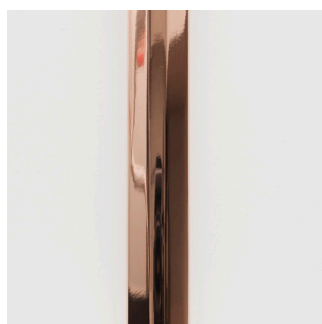


Oil Rubbed Bronze



Nickel Brass Contrast

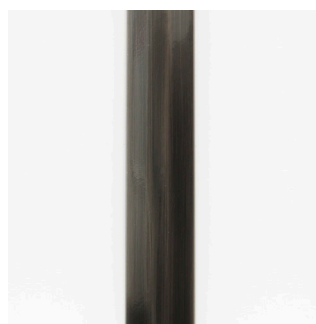
SPECIAL FINISHES - 10% UPCHARGE



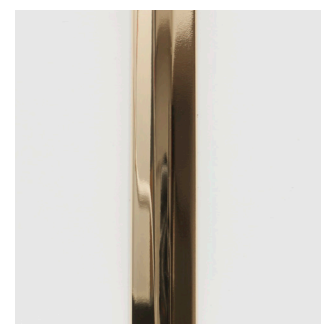
Polished Copper



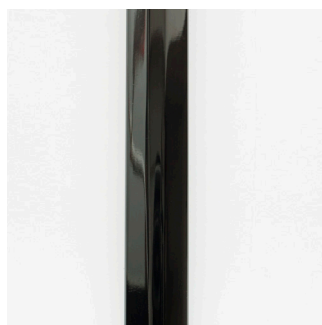
Medium Antique Brass



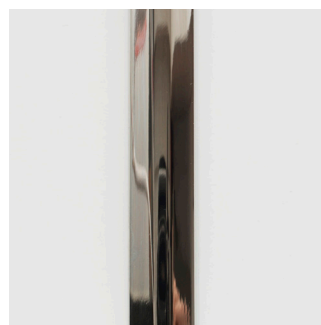
Dark Pewter



Polished Brass



Polished Black Nickel



Polished Nickel

CO/ONY

Bec Brittain

Materials & Finishes

Custom materials & finish matching available

ECHO GLASS



White Glass



Clear Mirror



Bronze Glass



Grey Glass