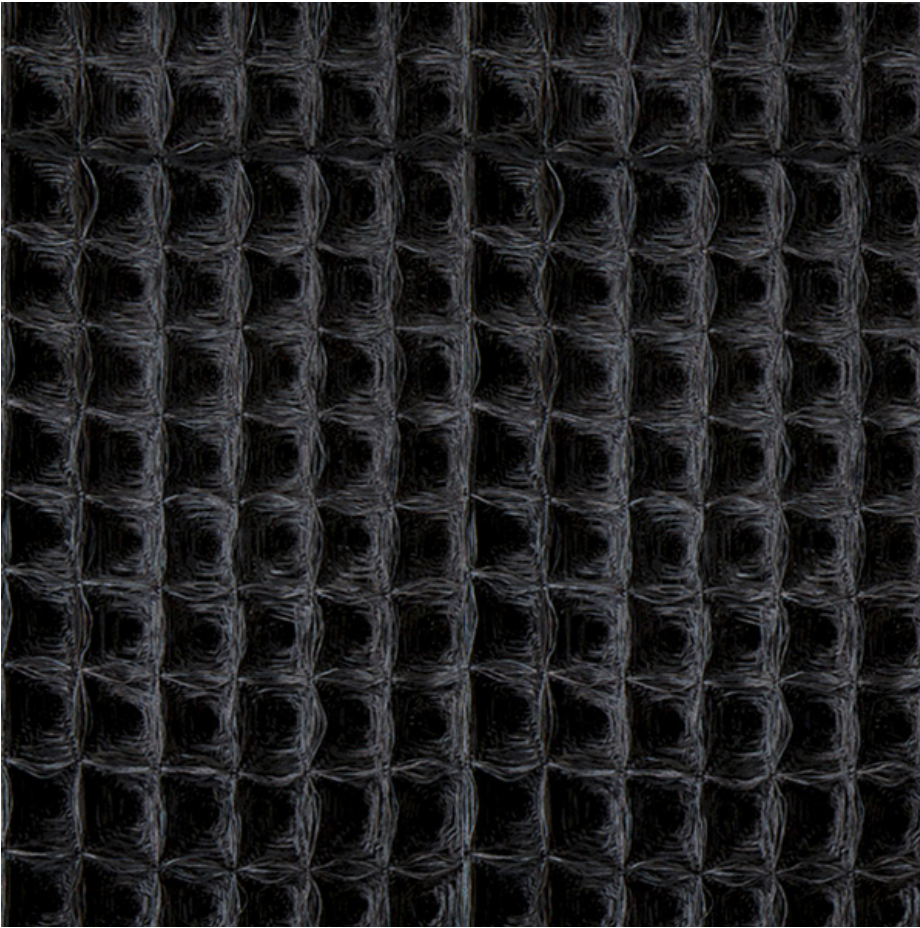


CO/ONY



HIROKO TAKEDA

Giant Charcoal

Giant Charcoal is part of the Giant Waffle series, an ongoing exploration of dimensionality through a structured weave. This piece is woven with black dyed silk, cotton, linen, and mohair fibers. *Composition and dimensions by commission.*

Dimension: 37"W x 72"H

As Shown: Silk, cotton, linen, and kid mohair