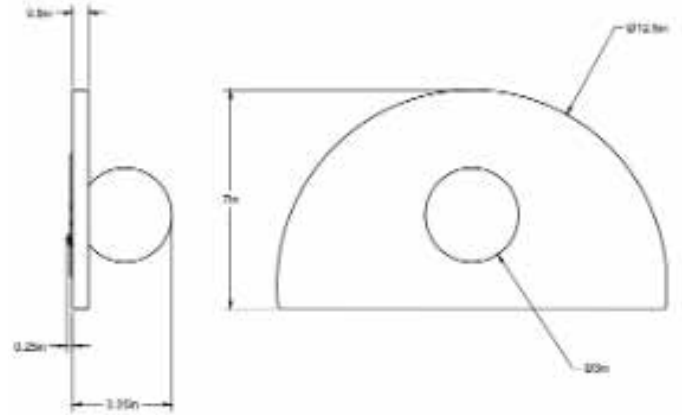


CO/ONY



Black & white



Rings

ALLIED MAKER

MQuan Half-Circle 12.5"

Using Allied Maker's bespoke hardware, Michele Quan of MQuan Studio has created a series of hand-painted stoneware backplates for a collaborative version of the Mini Orb sconce. Shown in firefly.

Dimensions: 12.5"W x 3.25"D x 7"H

Weight: 4.75 lbs

Standard Materials: Firefly, Black & White, or Rings ceramic backplate

Lead Time: Please Inquire

Certifications: cUL Damp locations

J-Box Requirements: Fits all standard junction boxes.

Lamping: 120V - G8 Bi-pin Base / 240V - G8 Bi-pin Base

Bulb Included: G8 Emery Allen LED

4.5W (50W Equivalent) LED

2700K / 90 CRI / G8 Bi-pin Base / Dimmable / 120 Volt

240V available upon request