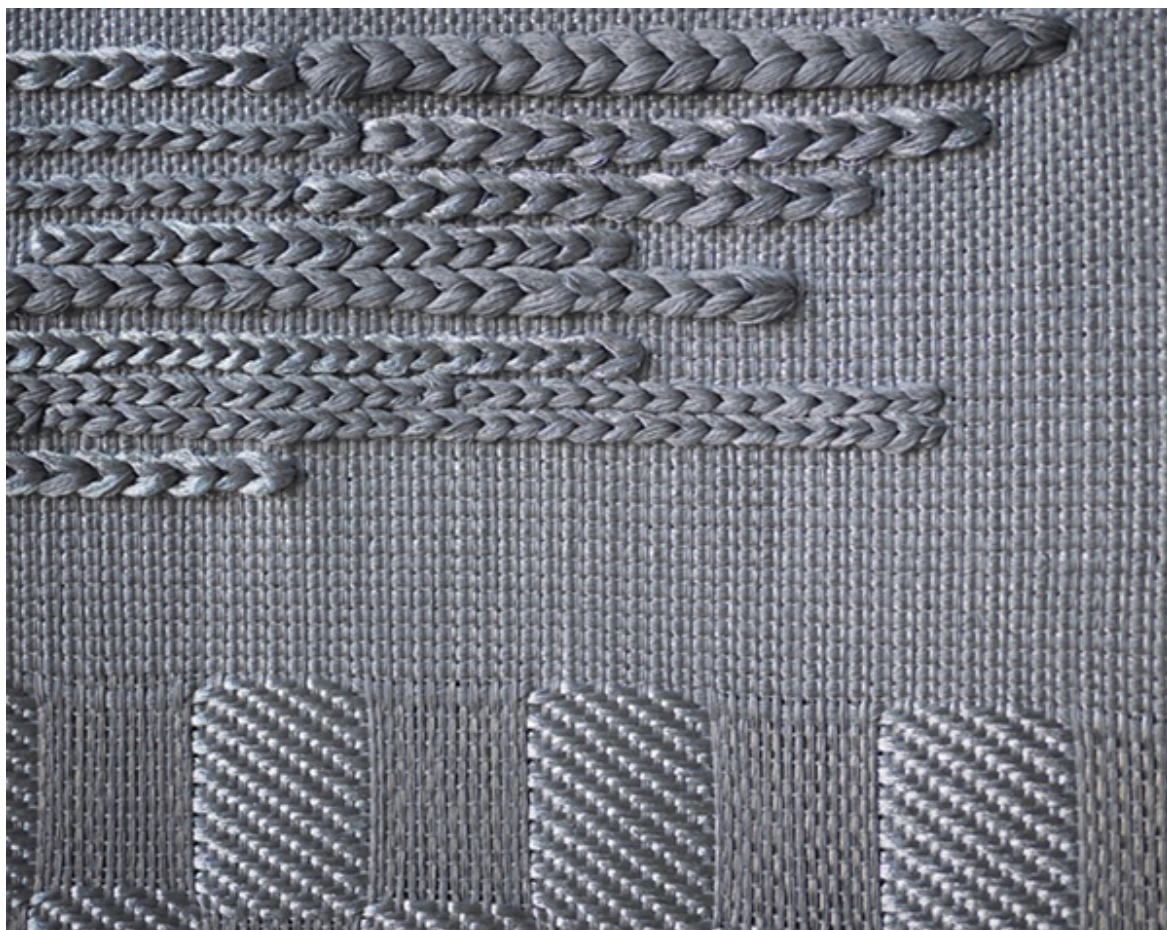


# CO/ONY



HIROKO TAKEDA

Chrome I

Chrome I is part of the Soft Metal series, a continuing investigation of the contrasting material qualities of fibers and metals. This piece uses varying weave structures and metallic yarn to mimic the reflective qualities of chromed metal. *Composition and dimensions by commission.*

Dimension: 28"W x 140"H

As Shown: Metallic yarn, bamboo, and linen